

TCL1 (ABT234) IHC kit

CatalogNo: IHCM6911

Key Features

Host Species

- Mouse

Reactivity

- Human,

Applications

- IHC

Isotype

- IgG2a,Kappa

Recommended Dilution Ratios

Storage

Storage* 2°C to 8°C/1 year

Basic Information

Clonality Monoclonal

Clone Number ABT234

Immunogen Information

Immunogen Synthesized peptide derived from human TCL1 AA range: 50-114

Specificity The antibody can specifically recognize human TCL1 protein.

Target Information

Gene name TCL1A TCL1

Protein Name TCL1

Organism

Gene ID

UniProt ID

Human

[8115](#);

[P56279](#);

Cellular Localization

Cytoplasmic, Nuclear

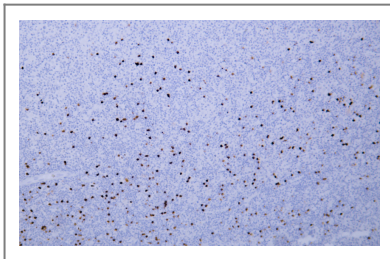
Tissue specificity

Restricted in the T-cell lineage to immature thymocytes and activated peripheral lymphocytes. Preferentially expressed early in T- and B-lymphocyte differentiation.

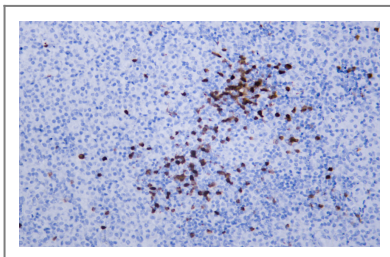
Function

Disease:Chromosomal aberrations activating TCL1A are found in chronic T-cell leukemias (T-CLL). Translocation t(14;14)(q11;q32); translocation t(7;14)(q35;q32); inversion inv(14)(q11;q32) that involves the T-cell receptor alpha/delta locuses.,Function:Enhances the phosphorylation and activation of AKT1, AKT2 and AKT3. Promotes nuclear translocation of AKT1. Enhances cell proliferation, stabilizes mitochondrial membrane potential and promotes cell survival.,similarity:Belongs to the TCL1 family.,subcellular location:Microsomal fraction.,subunit:Homodimer. Interacts with AKT1, AKT2 and AKT3 (via PH domain). Interacts with PNPT1; the interaction has no effect on PNPT1 exonuclease activity.,tissue specificity:Restricted in the T-cell lineage to immature thymocytes and activated peripheral lymphocytes. Preferentially expressed early in T- and B-lymphocyte differentiation.,

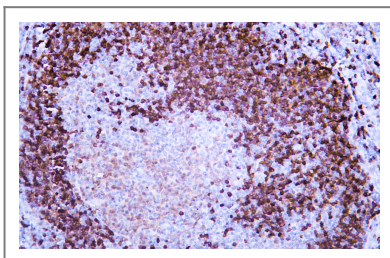
Validation Data



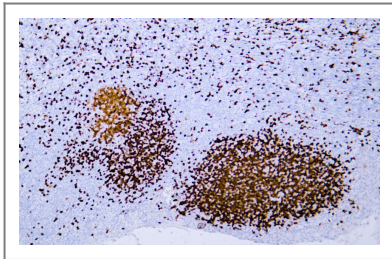
Human diffuse large B-cell lymphoma tissue was stained with Anti-TCL1 (ABT234) Antibody



Human diffuse large B-cell lymphoma tissue was stained with Anti-TCL1 (ABT234) Antibody



Human follicular lymphoma tissue was stained with Anti-TCL1 (ABT234) Antibody



Human tonsil tissue was stained with Anti-TCL1 (ABT234) Antibody

Contact information

Orders: order@immunoway.com
Support: tech@immunoway.com
Telephone: 408-747-0189 (USA) 400-8787-807(China)
Website: <http://www.immunoway.com>
Address: 2200 Ringwood Ave San Jose, CA 95131 USA



Please scan the QR code
to access additional
product information:
**TCL1 (ABT234) IHC
kit**

For Research Use Only. Not for Use in Diagnostic Procedures.

[Antibody](#) | [ELISA Kits](#) | [Protein](#) | [Reagents](#)