

S100P (ABT229) IHC kit

CatalogNo: IHCM6909

Key Features

Host Species

- Mouse

Reactivity

- Human,

Applications

- IHC

Isotype

- IgG1,Kappa

Recommended Dilution Ratios

Storage

Storage* 2°C to 8°C/1 year

Basic Information

Clonality Monoclonal

Clone Number ABT229

Immunogen Information

Immunogen Synthesized peptide derived from human S100P AA range: 1-95

Specificity The antibody can specifically recognize human S100P protein.

Target Information

Gene name S100P S100E

Protein Name S100P

Organism

Gene ID

UniProt ID

Human

[6286;](#)

[P25815;](#)

Cellular Localization

Nuclear, Cytoplasmic

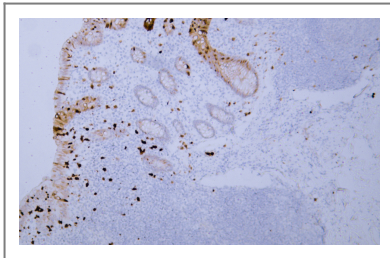
Tissue specificity

Detected in all of the tissues except brain, testis and small intestine, expression level is higher in placenta, heart, lung, skeletal muscle, spleen and leukocyte. Up-regulated in various pancreatic ductal adenocarcinomas and pancreatic intraepithelial neoplasias.

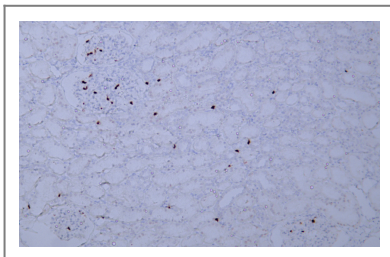
Function

miscellaneous:This protein binds two calcium ions.,similarity:Belongs to the S-100 family.,similarity:Contains 2 EF-hand domains.,subcellular location:Colocalizes with S100BPB in the nucleus.,subunit:Homodimer. Interacts with S100BPB and S100Z.,tissue specificity:Up-regulated in various pancreatic ductal adenocarcinomas and pancreatic intraepithelial neoplasias.,

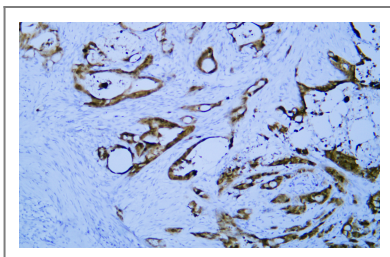
Validation Data



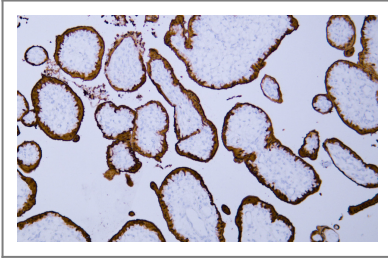
Human appendix tissue was stained with Anti-S100P (ABT229) Antibody



Human kidney tissue was stained with Anti-S100P (ABT229) Antibody



Human pancreatic cancer tissue was stained with Anti-S100P (ABT229) Antibody



Human placenta tissue was stained with Anti-S100P (ABT229) Antibody

| Contact information

Orders: order@immunoway.com
Support: tech@immunoway.com
Telephone: 408-747-0189 (USA) 400-8787-807(China)
Website: <http://www.immunoway.com>
Address: 2200 Ringwood Ave San Jose, CA 95131 USA



Please scan the QR code
to access additional
product information:
**S100P (ABT229) IHC
kit**

For Research Use Only. Not for Use in Diagnostic Procedures.

[Antibody](#) | [ELISA Kits](#) | [Protein](#) | [Reagents](#)