

PSA (ABT114) IHC kit

CatalogNo: IHCM6905

Key Features

Host Species

- Mouse

Reactivity

- Human,

Applications

- IHC

Isotype

- IgG2b,Kappa

Recommended Dilution Ratios

Storage

Storage* 2°C to 8°C/1 year

Basic Information

Clonality Monoclonal

Clone Number ABT114

Immunogen Information

Immunogen Synthesized peptide derived from human PSA AA range: 100-200

Specificity The antibody can specifically recognize human PSA protein.

Target Information

Gene name KLK3 APS

Protein Name PSA

Organism

Gene ID

UniProt ID

Human

[354;](#)

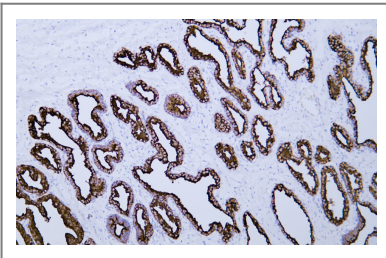
[P07288;](#)

Cellular Localization Cytoplasmic

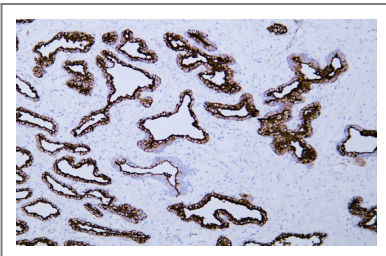
Tissue specificity Cytoplasmic

Function Catalytic activity:Preferential cleavage: -Tyr-|-Xaa-.,Function:Hydrolyzes semenogelin-1 thus leading to the liquefaction of the seminal coagulum.,online information:Prostate-specific antigen entry,similarity:Belongs to the peptidase S1 family.,similarity:Belongs to the peptidase S1 family. Kallikrein subfamily.,similarity:Contains 1 peptidase S1 domain.,

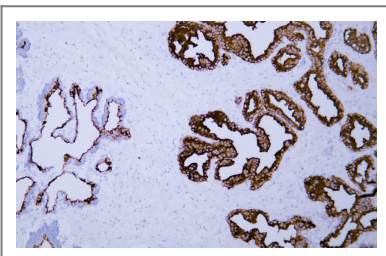
Validation Data



Human prostate tissue was stained with Anti-Prostate-Specific Antigen (ABT114) Antibody



Human prostate tissue was stained with Anti-Prostate-Specific Antigen (ABT114) Antibody



Human prostate tissue was stained with Anti-Prostate-Specific Antigen (ABT114) Antibody

Contact information

Orders: order@immunoway.com
Support: tech@immunoway.com
Telephone: 408-747-0189 (USA) 400-8787-807(China)
Website: http://www.immunoway.com
Address: 2200 Ringwood Ave San Jose, CA 95131 USA



Please scan the QR code
to access additional
product information:
**PSA (ABT114) IHC
kit**

For Research Use Only. Not for Use in Diagnostic Procedures.

[Antibody](#) | [ELISA Kits](#) | [Protein](#) | [Reagents](#)