

## Prolactin (ABT220) IHC kit

CatalogNo: IHCM6904

### Key Features

#### Host Species

- Mouse

#### Reactivity

- Human,

#### Applications

- IHC

#### Isotype

- IgG1,Kappa

### Recommended Dilution Ratios

### Storage

**Storage\*** 2°C to 8°C/1 year

### Basic Information

**Clonality** Monoclonal

**Clone Number** ABT220

### Immunogen Information

**Immunogen** Synthesized peptide derived from human Prolactin AA range: 100-227

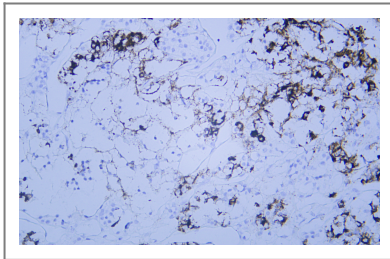
**Specificity** The antibody can specifically recognize human Prolactin protein.

### Target Information

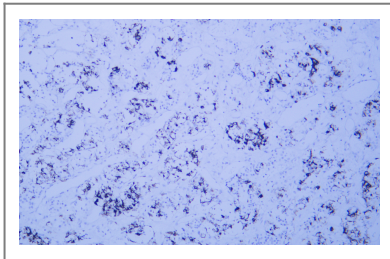
**Gene name** PRL

<b>Protein Name</b>	Prolactin		
	<b>Organism</b>	<b>Gene ID</b>	<b>UniProt ID</b>
	Human	<a href="#">5617;</a>	<a href="#">P01236;</a>
<b>Cellular Localization</b>	Cytoplasmic		
<b>Tissue specificity</b>	Cytoplasmic		
<b>Function</b>	Function:Prolactin acts primarily on the mammary gland by promoting lactation.,online information:Prolactin entry,similarity:Belongs to the somatotropin/prolactin family.,		

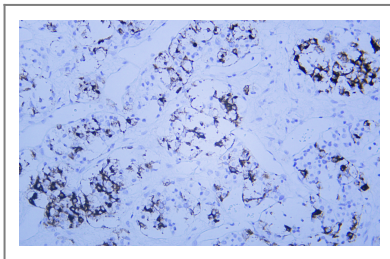
## Validation Data



Human pituitary adenoma tissue was stained with Anti-Prolactin (ABT220) Antibody



Human pituitary adenoma tissue was stained with Anti-Prolactin (ABT220) Antibody



Human pituitary adenoma tissue was stained with Anti-Prolactin (ABT220) Antibody

## Contact information

Orders: [order@immunoway.com](mailto:order@immunoway.com)  
 Support: [tech@immunoway.com](mailto:tech@immunoway.com)  
 Telephone: 408-747-0189 (USA) 400-8787-807(China)  
 Website: <http://www.immunoway.com>  
 Address: 2200 Ringwood Ave San Jose, CA 95131 USA



Please scan the QR code to access additional product information:  
**Prolactin (ABT220)**  
**IHC kit**

