

IRF-4/MUM1 (ABT080) IHC kit

CatalogNo: IHCM6893

Key Features

Host Species

- Mouse

Reactivity

- Human,

Applications

- IHC

Isotype

- IgG1,Kappa

Recommended Dilution Ratios

Storage

Storage* 2°C to 8°C/1 year

Basic Information

Clonality Monoclonal

Clone Number ABT080

Immunogen Information

Immunogen Synthesized peptide derived from human MUM1 AA range: 350-451

Specificity The antibody can specifically recognize human MUM1 protein.

Target Information

Gene name IRF4 MUM1

Protein Name MUM1

Organism

Gene ID

UniProt ID

Human

[3662;](#)

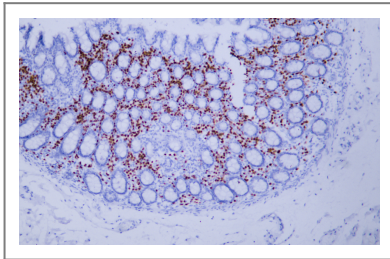
[Q15306;](#)

Cellular Localization Nuclear

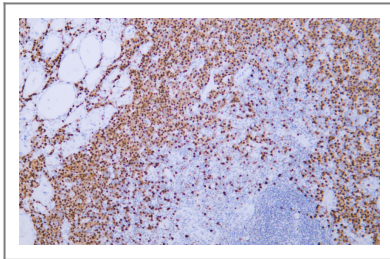
Tissue specificity Lymphoid cells.

Function Disease:A chromosomal aberration involving IRF4 may be a cause of multiple myeloma [MIM:254500]. Translocation t(6;14)(p25;q32) with the IgH locus.,Function:Transcriptional activator. Binds to the interferon-stimulated response element (ISRE) of the MHC class I promoter. Binds the immunoglobulin lambda light chain enhancer, together with PU.1. Probably plays a role in ISRE-targeted signal transduction mechanisms specific to lymphoid cells.,induction:Not induced by interferons.,similarity:Belongs to the IRF family.,similarity:Contains 1 tryptophan pentad repeat DNA-binding domain.,subunit:Interacts with SPIB and DEF6.,tissue specificity:Lymphoid cells.,

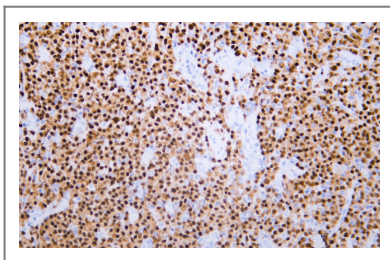
Validation Data



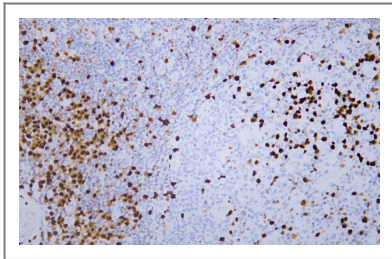
Human colon tissue was stained with Anti-MUM1 (ABT080) Antibody



Human diffuse large B-cell lymphoma tissue was stained with Anti-MUM1 (ABT080) Antibody



Human diffuse large B-cell lymphoma tissue was stained with Anti-MUM1 (ABT080) Antibody



Human tonsil tissue was stained with Anti-MUM1 (ABT080) Antibody

Contact information

Orders: order@immunoway.com
Support: tech@immunoway.com
Telephone: 408-747-0189 (USA) 400-8787-807(China)
Website: <http://www.immunoway.com>
Address: 2200 Ringwood Ave San Jose, CA 95131 USA



Please scan the QR code
to access additional
product information:
**IRF-4/MUM1
(ABT080) IHC kit**

For Research Use Only. Not for Use in Diagnostic Procedures.

[Antibody](#) | [ELISA Kits](#) | [Protein](#) | [Reagents](#)