

MUC6 (ABT201) IHC kit

CatalogNo: IHCM6892

Key Features

Host Species

- Mouse

Reactivity

- Human,

Applications

- IHC

Isotype

- IgG1,Kappa

Recommended Dilution Ratios

Storage

Storage* 2°C to 8°C/1 year

Basic Information

Clonality Monoclonal

Clone Number ABT201

Immunogen Information

Immunogen Synthesized peptide derived from human MUC6 AA range: 1000-1100

Specificity The antibody can specifically recognize human MUC6 protein.

Target Information

Gene name MUC6

Protein Name MUC6

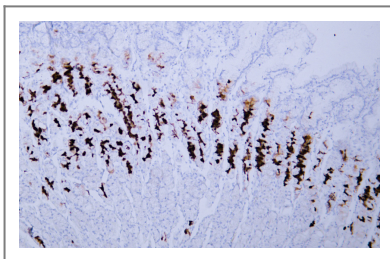
Organism	Gene ID	UniProt ID
Human	4588 ;	Q6W4X9 ;

Cellular Localization Cytoplasmic

Tissue specificity Expressed in the regenerative zone of gastric antrum, gastric body mucosa and gastric incisura mucosa. Expressed in the deeper mucous glands of gastric antrum. Overexpressed in Helicobacter pylori infected gastric epithelium. Highly expressed in duodenal Brunner's glands, gall bladder, seminal vesicle, pancreatic centroacinar cells and ducts, and periductal glands of the common bile duct.

Function developmental stage:Early expressed in fetal development and was observed in Brunner's glands and pancreatic ducts at 18-19 weeks and in gastric glands at 20 weeks of gestation. Expressed transiently in the nephrogenic zone of the kidney in the early mid-trimester of development. Detected in the epithelium of ureteric buds at 13 weeks and at lower levels from 17 to 23 weeks of gestation.,Function:May provide a mechanism for modulation of the composition of the protective mucus layer related to acid secretion or the presence of bacteria and noxious agents in the lumen. Play an important role in the cytoprotection of epithelial surfaces and are used as tumor markers in a variety of cancers. May play a role in epithelial organogenesis.,induction:Up-regulated by NFKB1. Repressed by mithramycin A which is an inhibitor of binding of transcription factors.,polymorphism:The number of repeats is highly polymorphic and varies among different alleles. These repeats are very similar but not identical.,PTM:O-glycosylated.,sequence Caution:Translated as Glu.,similarity:Contains 1 CTCK (C-terminal cystine knot-like) domain.,similarity:Contains 1 TIL (trypsin inhibitory-like) domain.,similarity:Contains 3 VWFD domains.,subunit:Multimer; disulfide-linked.,tissue specificity:Expressed in the regenerative zone of gastric antrum, gastric body mucosa and gastric incisura mucosa. Expressed in the deeper mucous glands of gastric antrum. Overexpressed in Helicobacter pylori infected gastric epithelium. Highly expressed in duodenal Brunner's glands, gall bladder, seminal vesicle, pancreatic centroacinar cells and ducts, and periductal glands of the common bile duct.,

| Validation Data



Human stomach tissue was stained with Anti-MUC6 (ABT201) Antibody

| Contact information

Orders: order@immunoway.com
Support: tech@immunoway.com
Telephone: 408-747-0189 (USA) 400-8787-807(China)
Website: http://www.immunoway.com
Address: 2200 Ringwood Ave San Jose, CA 95131 USA



Please scan the QR code
to access additional
product information:
**MUC6 (ABT201) IHC
kit**

For Research Use Only. Not for Use in Diagnostic Procedures.

[Antibody](#) | [ELISA Kits](#) | [Protein](#) | [Reagents](#)