

MAGE-C1 (ABT339) IHC kit

CatalogNo: IHCM6887

Key Features

Host Species

- Mouse

Reactivity

- Human,

Applications

- IHC

Isotype

- IgG1,Kappa

Recommended Dilution Ratios

Storage

Storage* 2°C to 8°C/1 year

Basic Information

Clonality Monoclonal

Clone Number ABT339

Immunogen Information

Immunogen Synthesized peptide derived from human MAGE-C1 AA range: 700-800

Specificity The antibody can specifically recognize human MAGE-C1 protein.

Target Information

Gene name MAGEC1

Protein Name MAGE-C1

Organism

Human

Gene ID

[9947;](#)

UniProt ID

[O60732;](#)

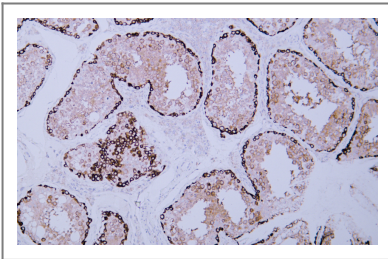
Cellular Localization

Cytoplasmic

Tissue specificity Expressed in testis and in tumors of a wide variety of histologic types.

Function similarity:Contains 1 MAGE domain.,tissue specificity:Expressed in testis and in tumors of a wide variety of histologic types.,

Validation Data



Human testis tissue was stained with Anti-MAGE-C1 (ABT339) Antibody

Contact information

Orders: order@immunoway.com
Support: tech@immunoway.com
Telephone: 408-747-0189 (USA) 400-8787-807(China)
Website: <http://www.immunoway.com>
Address: 2200 Ringwood Ave San Jose, CA 95131 USA



Please scan the QR code to access additional product information:
MAGE-C1 (ABT339)
IHC kit

For Research Use Only. Not for Use in Diagnostic Procedures.

[Antibody](#) | [ELISA Kits](#) | [Protein](#) | [Reagents](#)