

Lysozyme (ABT191) IHC kit

CatalogNo: IHCM6885

Key Features

Host Species

- Mouse

Reactivity

- Human, Mouse, Rat,

Applications

- IHC

Isotype

- IgG3, Kappa

Recommended Dilution Ratios

Storage

Storage* 2°C to 8°C/1 year

Basic Information

Clonality Monoclonal

Clone Number ABT191

Immunogen Information

Immunogen Synthesized peptide derived from human Lysozyme AA range: 1-100

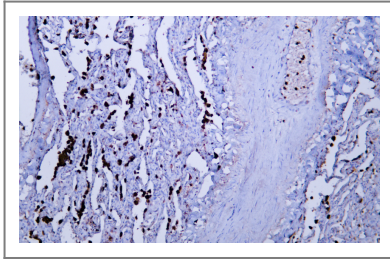
Specificity The antibody can specifically recognize human Lysozyme protein.

Target Information

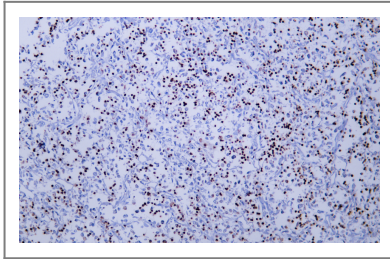
Gene name LYZ L2M

Protein Name	Lysozyme	Organism	Gene ID	UniProt ID
		Human	4069;	P61626;
Cellular Localization	Cytoplasmic			

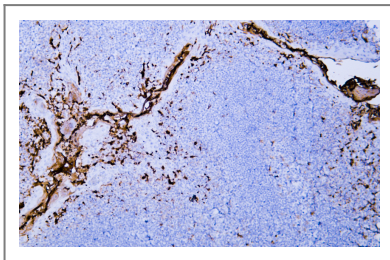
Validation Data



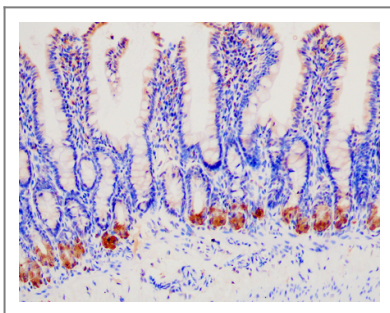
Human lung tissue was stained with Anti-Lysozyme (ABT191) Antibody



Human malignant fibrous histiocytoma tissue was stained with Anti-Lysozyme (ABT191) Antibody



Human tonsil tissue was stained with Anti-Lysozyme (ABT191) Antibody



Immunohistochemical analysis of rat-colon tissue. 1, primary Antibody was diluted at 1:200(4°C,overnight). HRP labeled Secondary antibody room temperature, 50min(Cat: RS0033).

Contact information

Orders: order@immunoway.com
Support: tech@immunoway.com
Telephone: 408-747-0189 (USA) 400-8787-807(China)
Website: http://www.immunoway.com
Address: 2200 Ringwood Ave San Jose, CA 95131 USA



Please scan the QR code
to access additional
product information:
Lysozyme (ABT191)
IHC kit

For Research Use Only. Not for Use in Diagnostic Procedures.

[Antibody](#) | [ELISA Kits](#) | [Protein](#) | [Reagents](#)