

HSP60 (ABT186) IHC kit

CatalogNo: IHCM6884

Key Features

Host Species

- Mouse

Reactivity

- Human, Mouse, Rat,

Applications

- IHC

Isotype

- IgG2b, Kappa

Recommended Dilution Ratios

Storage

Storage* 2°C to 8°C/1 year

Basic Information

Clonality Monoclonal

Clone Number ABT186

Immunogen Information

Immunogen Synthesized peptide derived from human HSP60 AA range: 500-573

Specificity The antibody can specifically recognize human HSP60 protein.

Target Information

Gene name MAPK7

Protein Name HSP60

Organism

Gene ID

UniProt ID

Human

[3329](#);

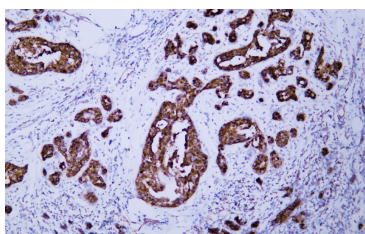
[P10809](#);

Cellular Localization Cytoplasmic

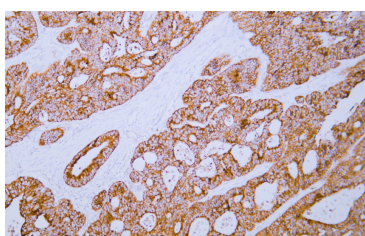
Tissue specificity Cytoplasmic

Function Disease:Defects in HSPD1 are a cause of spastic paraplegia autosomal dominant type 13 (SPG13) [MIM:605280]. Spastic paraplegia is a degenerative spinal cord disorder characterized by a slow, gradual, progressive weakness and spasticity of the lower limbs.,Disease:Defects in HSPD1 are the cause of leukodystrophy hypomyelinating type 4 (HLD4) [MIM:612233]; also called mitochondrial HSP60 chaperonopathy or MitCHAP-60 disease. HLD4 is a severe autosomal recessive hypomyelinating leukodystrophy. Clinically characterized by infantile-onset rotary nystagmus, progressive spastic paraplegia, neurologic regression, motor impairment, profound mental retardation. Death usually occurs within the first 2 decades of life.,Function:Implicated in mitochondrial protein import and macromolecular assembly. May facilitate the correct folding of imported proteins. May also prevent misfolding and promote the refolding and proper assembly of unfolded polypeptides generated under stress conditions in the mitochondrial matrix.,similarity:Belongs to the chaperonin (HSP60) family.,similarity:Belongs to the TCP-1 chaperonin family.,subunit:Interacts with HBV protein X and HTLV-1 protein p40tax.,

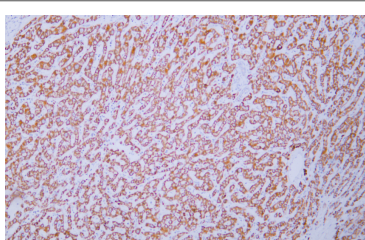
Validation Data



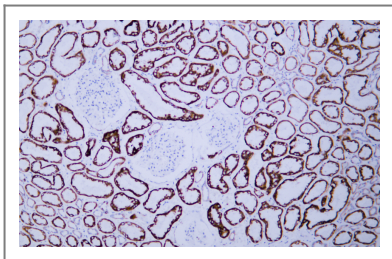
Human breast carcinoma tissue was stained with Anti-HSP60 (ABT186) Antibody



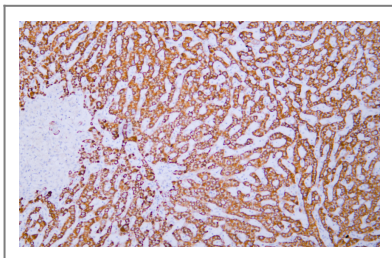
Human colon carcinoma tissue was stained with Anti-HSP60 (ABT186) Antibody



Human hepatocellular carcinoma tissue was stained with Anti-HSP60 (ABT186) Antibody



Human kidney tissue was stained with Anti-HSP60 (ABT186) Antibody



Human liver tissue was stained with Anti-HSP60 (ABT186) Antibody

Contact information

Orders: order@immunoway.com
Support: tech@immunoway.com
Telephone: 408-747-0189 (USA) 400-8787-807(China)
Website: <http://www.immunoway.com>
Address: 2200 Ringwood Ave San Jose, CA 95131 USA



Please scan the QR code
to access additional
product information:
**HSP60 (ABT186) IHC
kit**

For Research Use Only. Not for Use in Diagnostic Procedures.

[Antibody](#) | [ELISA Kits](#) | [Protein](#) | [Reagents](#)