

GCDFP-15 (ABT330) IHC kit

CatalogNo: IHCM6879

Key Features

Host Species

- Mouse

Reactivity

- Human,

Applications

- IHC

Isotype

- IgG1,Kappa

Recommended Dilution Ratios

Storage

Storage* 2°C to 8°C/1 year

Basic Information

Clonality Monoclonal

Clone Number ABT330

Immunogen Information

Immunogen Synthesized peptide derived from human Gross cystic disease fluid protein-15 (GCDFP-15) AA range: 50-146

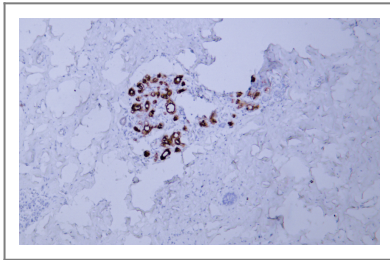
Specificity The antibody can specifically recognize human GCDFP-15 protein.

Target Information

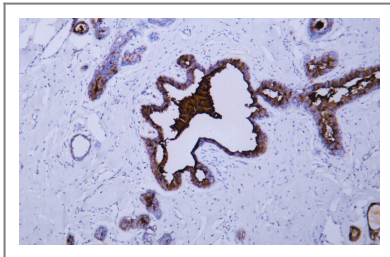
Gene name PIP GCDFP15 GPIP4

Protein Name	Gross cystic disease fluid protein-15 (GCDFP-15)		
	Organism	Gene ID	UniProt ID
	Human	5304;	P12273;
Cellular Localization	Cytoplasmic		
Tissue specificity	Expressed in pathological conditions of the mammary gland and in several exocrine tissues, such as the lacrimal, salivary, and sweat glands.		
Function	induction:By prolactin and androgen; inhibited by estrogen.,similarity:Belongs to the PIP family.,subunit:Monomer. Interacts with AZGP1.,tissue specificity:Expressed in pathological conditions of the mammary gland and in several exocrine tissues, such as the lacrimal, salivary, and sweat glands.,		

Validation Data



Human breast tissue was stained with Anti-GCDFP-15 (ABT330) Antibody



Human breast carcinoma tissue was stained with Anti-GCDFP-15 (ABT330) Antibody

Contact information

Orders: order@immunoway.com
 Support: tech@immunoway.com
 Telephone: 408-747-0189 (USA) 400-8787-807(China)
 Website: <http://www.immunoway.com>
 Address: 2200 Ringwood Ave San Jose, CA 95131 USA



Please scan the QR code to access additional product information:
GCDFP-15 (ABT330)
IHC kit