

Glycophorin A (ABT179) IHC kit

CatalogNo: IHCM6878

Key Features

Host Species

- Mouse

Reactivity

- Human,

Applications

- IHC

Isotype

- IgG1,Kappa

Recommended Dilution Ratios

Storage

Storage* 2°C to 8°C/1 year

Basic Information

Clonality Monoclonal

Clone Number ABT179

Immunogen Information

Immunogen Synthesized peptide derived from human Glycophorin A AA range: 1-100

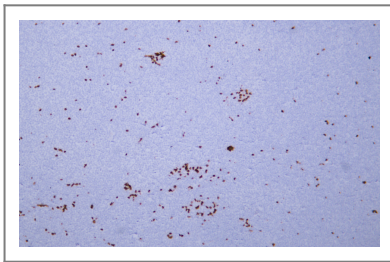
Specificity The antibody can specifically recognize human Glycophorin A protein.

Target Information

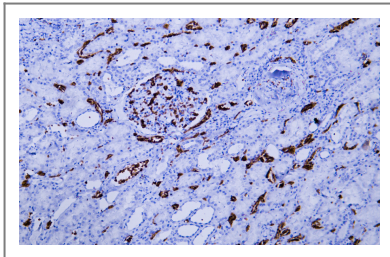
Gene name GYPA GPA

| | | | |
|------------------------------|---|-----------------------|-------------------------|
| Protein Name | Glycophorin A | | |
| | Organism | Gene ID | UniProt ID |
| | Human | 2993; | P02724; |
| Cellular Localization | Membranous | | |
| Tissue specificity | Cytoplasmic | | |
| Function | <p>Function:Glycophorin A is the major intrinsic membrane protein of the erythrocyte. The N-terminal glycosylated segment, which lies outside the erythrocyte membrane, has MN blood group receptors and also binds influenza virus.,online information:Blood group antigen gene mutation database,polymorphism:Along with GYPB, GYPA is responsible for the MNS blood group system.,similarity:Belongs to the glycophorin A family.,</p> | | |

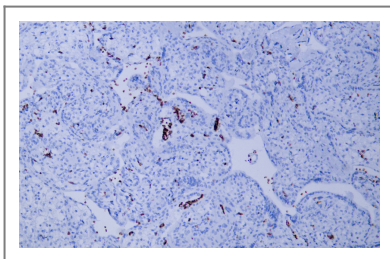
Validation Data



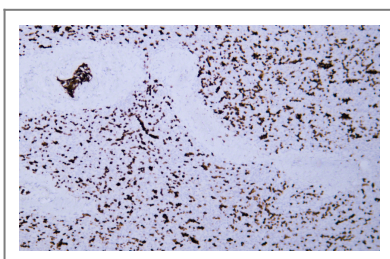
Human acute myeloid leukemia tissue was stained with Anti-Glycophorin A (ABT179) Antibody



Human kidney tissue was stained with Anti-Glycophorin A (ABT179) Antibody



Human placenta tissue was stained with Anti-Glycophorin A (ABT179) Antibody



Human spleen tissue was stained with Anti-Glycophorin A (ABT179) Antibody

| Contact information

Orders: order@immunoway.com
Support: tech@immunoway.com
Telephone: 408-747-0189 (USA) 400-8787-807(China)
Website: <http://www.immunoway.com>
Address: 2200 Ringwood Ave San Jose, CA 95131 USA



Please scan the QR code to access additional product information:
Glycophorin A (ABT179) IHC kit

For Research Use Only. Not for Use in Diagnostic Procedures.

[Antibody](#) | [ELISA Kits](#) | [Protein](#) | [Reagents](#)