

Gastrin (ABT174) IHC kit

CatalogNo: IHCM6876

Key Features

Host Species

- Mouse

Reactivity

- Human,

Applications

- IHC

Isotype

- IgG2b,Kappa

Recommended Dilution Ratios

Storage

Storage* 2°C to 8°C/1 year

Basic Information

Clonality Monoclonal

Clone Number ABT174

Immunogen Information

Immunogen Synthesized peptide derived from human Gastrin AA range: 50-101

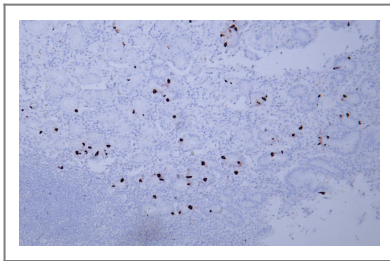
Specificity The antibody can specifically recognize human Gastrin protein.

Target Information

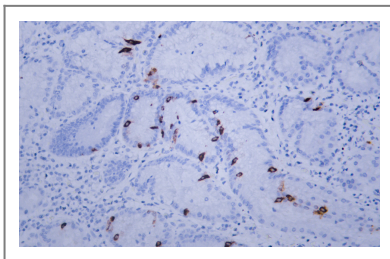
Gene name GAST GAS

Protein Name	Gastrin						
	<table border="0"> <thead> <tr> <th>Organism</th> <th>Gene ID</th> <th>UniProt ID</th> </tr> </thead> <tbody> <tr> <td>Human</td> <td>2520;</td> <td>P01350;</td> </tr> </tbody> </table>	Organism	Gene ID	UniProt ID	Human	2520;	P01350;
Organism	Gene ID	UniProt ID					
Human	2520;	P01350;					
Cellular Localization	Cytoplasmic						
Tissue specificity	Cytoplasmic						
Function	<p>Function:Gastrin stimulates the stomach mucosa to produce and secrete hydrochloric acid and the pancreas to secrete its digestive enzymes. It also stimulates smooth muscle contraction and increases blood circulation and water secretion in the stomach and intestine.,online information:Gastrin entry,PTM:Sulfation enhances proteolytic processing, and blocks peptide degradation. Levels of sulfation differ between proteolytically-cleaved gastrins. Thus, gastrin-6 is almost 73% sulfated, whereas the larger gastrins are less than 50% sulfated. Sulfation levels are also tissue-specific.,PTM:Two different processing pathways probably exist in antral G-cells. In the dominant pathway progastrin is cleaved at three sites resulting in two major bioactive gastrins, gastrin-34 and gastrin-17. In the putative alternative pathway, progastrin may be processed only at the most C-terminal dibasic site resulting in the synthesis of gastrin-71.,similarity:Belongs to the gastrin/cholecystokinin family.,</p>						

| Validation Data



Human gastric adenocarcinoma tissue was stained with Anti-Gastrin (ABT174) Antibody



Human stomach tissue was stained with Anti-Gastrin (ABT174) Antibody

| Contact information

Orders: order@immunoway.com
Support: tech@immunoway.com
Telephone: 408-747-0189 (USA) 400-8787-807(China)
Website: http://www.immunoway.com
Address: 2200 Ringwood Ave San Jose, CA 95131 USA



Please scan the QR code
to access additional
product information:
Gastrin (ABT174)
IHC kit

For Research Use Only. Not for Use in Diagnostic Procedures.

[Antibody](#) | [ELISA Kits](#) | [Protein](#) | [Reagents](#)