

FSH (ABT172) IHC kit

CatalogNo: IHCM6874

Key Features

Host Species

- Mouse

Reactivity

- Human,

Applications

- IHC

Isotype

- IgG2a,Kappa

Recommended Dilution Ratios

Storage

Storage* 2°C to 8°C/1 year

Basic Information

Clonality Monoclonal

Clone Number ABT172

Immunogen Information

Immunogen Synthesized peptide derived from human FSH AA range: 1-100

Specificity The antibody can specifically recognize human FS H protein, and shows no cross reaction with LH, CG and TSH proteins.

Target Information

Gene name FSHB

Protein Name FSH

Organism

Gene ID

UniProt ID

Human

[2488;](#)

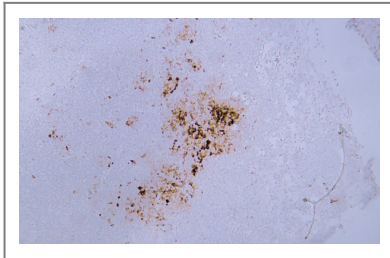
[P01225;](#)

Cellular Localization Cytoplasmic

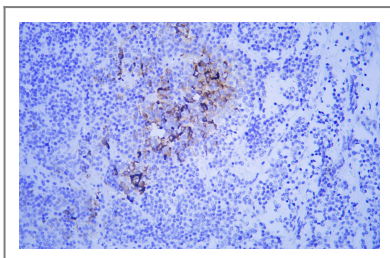
Tissue specificity Cytoplasmic

Function Disease:Defects in FSHB are a cause of isolated follicle-stimulating hormone deficiency (IFSHD) [MIM:229070]. Selective follicle-stimulating hormone deficiency is an uncommon cause of infertility, producing amenorrhea and hypogonadism in women and oligo or azoospermia with normal testosterone levels in normally virilised men.,Function:Stimulates development of follicle and spermatogenesis in the reproductive organs.,online information:Follicle-stimulating hormone entry,online information:The Singapore human mutation and polymorphism database,pharmaceutical:Available under the names Gonal-F or Metrodin HP (Serono) and Puregon (Organon). Used in the treatment of infertility in women with proven hypopituitarism or who have not responded to clomifene; or in superovulation treatment for assisted conception (such as in vitro fertilization). Metrodin HP is also used in the treatment of hypogonadotropic hypogonadism in men for the stimulation of spermatogenesis.,similarity:Belongs to the glycoprotein hormones subunit beta family.,subunit:Heterodimer of a common alpha chain and a unique beta chain which confers biological specificity to thyrotropin, lutropin, follitropin and gonadotropin.,

Validation Data



Human pituitary adenoma tissue was stained with Anti-FSH (ABT172) Antibody



Human pituitary adenoma tissue was stained with Anti-FSH (ABT172) Antibody

Contact information

Orders: order@immunoway.com
Support: tech@immunoway.com
Telephone: 408-747-0189 (USA) 400-8787-807(China)
Website: http://www.immunoway.com
Address: 2200 Ringwood Ave San Jose, CA 95131 USA



Please scan the QR code
to access additional
product information:
**FSH (ABT172) IHC
kit**

For Research Use Only. Not for Use in Diagnostic Procedures.

[Antibody](#) | [ELISA Kits](#) | [Protein](#) | [Reagents](#)