

Cytokeratin 19 (ABT050) IHC kit

CatalogNo: IHCM6863

Key Features

Host Species

- Mouse

Reactivity

- Human,

Applications

- IHC

Isotype

- IgG2b,Kappa

Recommended Dilution Ratios

Storage

Storage* 2°C to 8°C/1 year

Basic Information

Clonality Monoclonal

Clone Number ABT050

Immunogen Information

Immunogen Synthesized peptide derived from human CK19 AA range: 300-400

Specificity The antibody can specifically recognize human CK19 protein, and shows no cross reaction with CK1, 5, 6, 7, 8, 10, 13, 14, 15, 17, 18, 20.

Target Information

Gene name KRT19

Protein Name CK19

Organism

Human

Gene ID

[3880;](#)

UniProt ID

[P08727;](#)

Cellular Localization

Cytoplasmic, Membranous

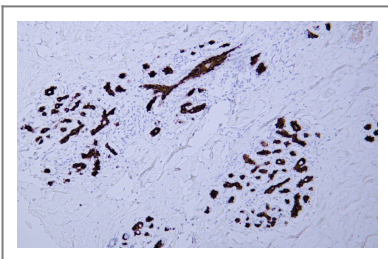
Tissue specificity

Expressed in a defined zone of basal keratinocytes in the deep outer root sheath of hair follicles. Also observed in sweat gland and mammary gland ductal and secretory cells, bile ducts, gastrointestinal tract, bladder urothelium, oral epithelia, esophagus, ectocervical epithelium (at protein level). Expressed in epidermal basal cells, in nipple epidermis and a defined region of the hair follicle. Also seen in a subset of vascular wall cells in both the veins and artery of human umbilical cord, and in umbilical cord vascular smooth muscle. Observed in muscle fibers accumulating in the costameres of myoplasm at the sarcolemma in structures that contain dystrophin and spectrin.

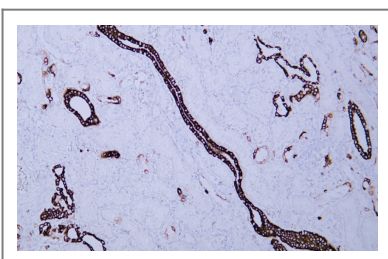
Function

developmental stage:Present in hair follicles at all stages of development.,Domain:This keratin differs from all other IF proteins in lacking the C-terminal tail domain.,Function:Involved in the organization of myofibers. Together with KRT8, helps to link the contractile apparatus to dystrophin at the costameres of striated muscle.,miscellaneous:There are two types of cytoskeletal and microfibrillar keratin: I (acidic; 40-55 kDa) and II (neutral to basic; 56-70 kDa).,similarity:Belongs to the intermediate filament family.,subunit:Heterotetramer of two type I and two type II keratins. Interacts with PNN and the actin-binding domain of DMD. Interacts with HCV core protein.,tissue specificity:Expressed in a defined zone of basal keratinocytes in the deep outer root sheath of hair follicles. Also observed in sweat gland and mammary gland ductal and secretory cells, bile ducts, gastrointestinal tract, bladder urothelium, oral epithelia, esophagus, ectocervical epithelium (at protein level). Expressed in epidermal basal cells, in nipple epidermis and a defined region of the hair follicle. Also seen in a subset of vascular wall cells in both the veins and artery of human umbilical cord, and in umbilical cord vascular smooth muscle. Observed in muscle fibers accumulating in the costameres of myoplasm at the sarcolemma in structures that contain dystrophin and spectrin.,

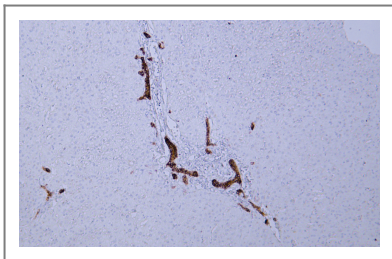
| Validation Data



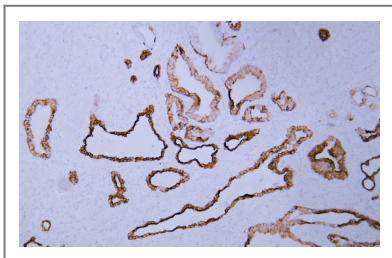
Human breast tissue was stained with Anti-Cytokeratin 19 (ABT050) Antibody



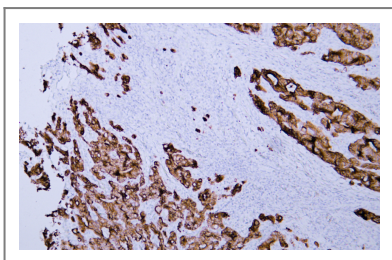
Human kidney tissue was stained with Anti-Cytokeratin 19 (ABT050) Antibody



Human liver tissue was stained with Anti-Cytokeratin 19 (ABT050) Antibody



Human prostatic adenocarcinoma tissue was stained with Anti-Cytokeratin 19 (ABT050) Antibody



Human rectal carcinoma tissue was stained with Anti-Cytokeratin 19 (ABT050) Antibody

Contact information

Orders: order@immunoway.com
Support: tech@immunoway.com
Telephone: 408-747-0189 (USA) 400-8787-807(China)
Website: <http://www.immunoway.com>
Address: 2200 Ringwood Ave San Jose, CA 95131 USA



Please scan the QR code to access additional product information:
Cytokeratin 19 (ABT050) IHC kit

For Research Use Only. Not for Use in Diagnostic Procedures.

[Antibody](#) | [ELISA Kits](#) | [Protein](#) | [Reagents](#)