

Cytokeratin 18 (ABT054) IHC kit

CatalogNo: IHCM6862

Key Features

Host Species

- Mouse

Reactivity

- Human, Mouse, Rat,

Applications

- IHC

Isotype

- IgG2b, Kappa

Recommended Dilution Ratios

Storage

Storage* 2°C to 8°C/1 year

Basic Information

Clonality Monoclonal

Clone Number ABT054

Immunogen Information

Immunogen Synthesized peptide derived from human CK18 AA range: 200-300

Specificity The antibody can specifically recognize human CK18 protein, and shows no cross reaction with CK1, 5, 6, 7, 8, 10, 13, 14, 15, 19, 20.

Target Information

Gene name KRT18 CYK18 PIG46

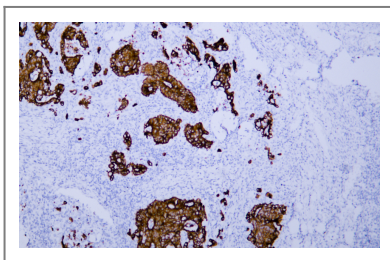
Protein Name	Cytokeratin-18		
	Organism	Gene ID	UniProt ID
	Human	3875;	P05783;

Cellular Localization Cytoplasmic, Membranous

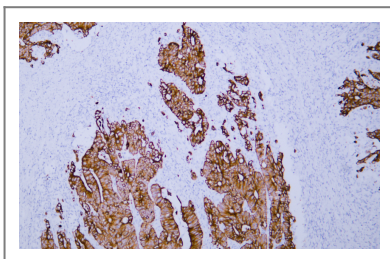
Tissue specificity Expressed in colon, placenta, liver and very weakly in exocervix. Increased expression observed in lymph nodes of breast carcinoma.

Function Disease:Defects in KRT18 are a cause of cryptogenic cirrhosis [MIM:215600].,Function:Involved in the uptake of thrombin-antithrombin complexes by hepatic cells (By similarity). When phosphorylated, plays a role in filament reorganization. Involved in the delivery of mutated CFTR to the plasma membrane. Together with KRT8, is involved in interleukin-6 (IL-6)-mediated barrier protection.,induction:By IL-6.,miscellaneous:There are two types of cytoskeletal and microfibrillar keratin: I (acidic; 40-55 kDa) and II (neutral to basic; 56-70 kDa).,PTM:O-glycosylated at multiple sites; glycans consist of single N-acetylglucosamine residues.,PTM:Phosphorylation at Ser-34 increases during mitosis. Hyperphosphorylated at Ser-53 in diseased cirrhosis liver. Phosphorylation increases by IL-6.,PTM:Proteolytically cleaved by caspases during epithelial cell apoptosis. Cleavage occurs at Asp-238 by either caspase-3, caspase-6 or caspase-7.,similarity:Belongs to the intermediate filament family.,subunit:Heterotetramer of two type I and two type II keratins. Keratin-18 associates with keratin-8. Interacts with the thrombin-antithrombin complex (By similarity). Interacts with PNN, HCV core protein and mutated CFTR. Interacts with YWHAЕ, YWHAH and YWHAZ only when phosphorylated. Interacts with DNAJB6, TCHP and TRADD.,tissue specificity:Expressed in colon, placenta, liver and very weakly in exocervix. Increased expression observed in lymph nodes of breast carcinoma.,

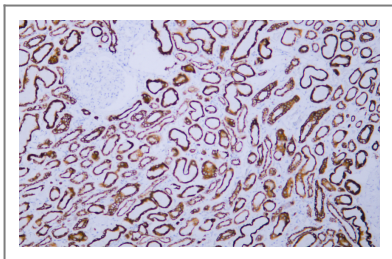
Validation Data



Human colon carcinoma tissue was stained with Anti-Cytokeratin 18 (ABT054) Antibody



Human colon carcinoma tissue was stained with Anti-Cytokeratin 18 (ABT054) Antibody



Human kidney tissue was stained with Anti-Cytokeratin 18 (ABT054) Antibody

| Contact information

Orders: order@immunoway.com
Support: tech@immunoway.com
Telephone: 408-747-0189 (USA) 400-8787-807(China)
Website: <http://www.immunoway.com>
Address: 2200 Ringwood Ave San Jose, CA 95131 USA



Please scan the QR code
to access additional
product information:
Cytokeratin 18
(ABT054) IHC kit

For Research Use Only. Not for Use in Diagnostic Procedures.

[Antibody](#) | [ELISA Kits](#) | [Protein](#) | [Reagents](#)