

## Claudin 7 (ABT441) IHC kit

CatalogNo: IHCM6852

### Key Features

#### Host Species

- Mouse

#### Reactivity

- Human, Mouse, Rat,

#### Applications

- IHC

#### Isotype

- IgG2b, Kappa

### Recommended Dilution Ratios

### Storage

**Storage\*** 2°C to 8°C/1 year

### Basic Information

**Clonality** Monoclonal

**Clone Number** ABT441

### Immunogen Information

**Immunogen** Synthesized peptide derived from human Claudin 7 AA range: 100-211

**Specificity** The antibody can specifically recognize human Claudin 7 protein.

### Target Information

**Gene name** CLDN7 CEPTRL2 CPETRL2

**Protein Name** CEPTR L2;CEPTRL 2;CEPTRL2;Claudin 1;Claudin 7;Claudin 9;Claudin-7;Claudin1;Claudin7;Claudin9;CLD7\_HUMAN;CLDN 7;CLDN-7;CLDN7;Clostridium perfringens enterotoxin receptor like 2;CPETR L2;CPETRL 2;CPETRL2;Hs.84359

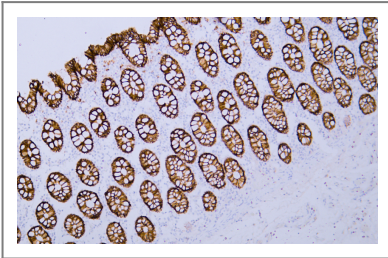
Organism	Gene ID	UniProt ID
Human	<a href="#">1366;</a>	<a href="#">O95471;</a>
Mouse		<a href="#">Q9Z261;</a>
Rat		<a href="#">Q9Z1L1;</a>

**Cellular Localization** Membranous

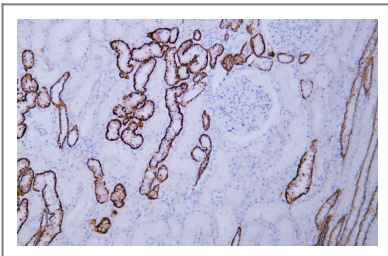
**Tissue specificity** kindey

**Function** Function:Plays a major role in tight junction-specific obliteration of the intercellular space.,induction:By androgens.,similarity:Belongs to the claudin family.,subunit:Directly interacts with TJP1/ZO-1, TJP2/ZO-2 and TJP3/ZO-3.,tissue specificity:Expressed in kidney, lung and prostate. Isoform 1 seems to be predominant, except in some normal prostate samples, where isoform 2 is the major form. Down-regulated in breast cancers, including ductal carcinoma in situ (DCIS), lobular carcinoma in situ (LCIS) and invasive ductal carcinoma (IDC) (at protein level), as well as in several cancer cell lines. Loss of expression correlates with histological grade, occurring predominantly in high-grade lesions.,

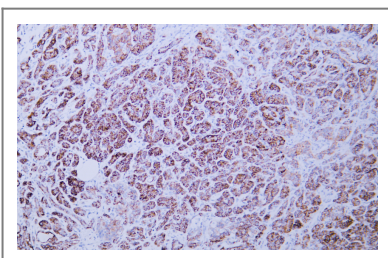
## Validation Data



Human colon tissue was stained with Anti-Claudin 7 (ABT441) Antibody



Human kidney tissue was stained with Anti-Claudin 7 (ABT441) Antibody



Human pancreas tissue was stained with Anti-Claudin 7 (ABT441) Antibody

## | Contact information

Orders: order@immunoway.com  
Support: tech@immunoway.com  
Telephone: 408-747-0189 (USA) 400-8787-807(China)  
Website: <http://www.immunoway.com>  
Address: 2200 Ringwood Ave San Jose, CA 95131 USA



Please scan the QR code  
to access additional  
product information:  
**Claudin 7 (ABT441)**  
**IHC kit**

---

For Research Use Only. Not for Use in Diagnostic Procedures.

[Antibody](#) | [ELISA Kits](#) | [Protein](#) | [Reagents](#)