

CD99 (ABT156) IHC kit

CatalogNo: IHCM6847

Key Features

Host Species

- Mouse

Reactivity

- Human,

Applications

- IHC

Isotype

- IgG1,Kappa

Recommended Dilution Ratios

Storage

Storage* 2°C to 8°C/1 year

Basic Information

Clonality Monoclonal

Clone Number ABT156

Immunogen Information

Immunogen Synthesized peptide derived from human CD99 AA range: 1-100

Specificity The antibody can specifically recognize human CD99 protein.

Target Information

Gene name CD99 MIC2 MIC2X MIC2Y

Protein Name CD99

Organism

Gene ID

UniProt ID

Human

[4267](#);

[P14209](#);

Cellular Localization

Membranous

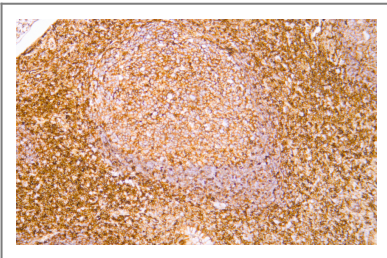
Tissue specificity

Membranous

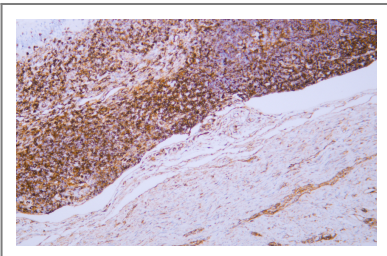
Function

Function:Involved in T-cell adhesion processes. It is involved in spontaneous rosette formation with erythrocytes.,miscellaneous:The gene encoding for this protein is located in the pseudoautosomal region 1 (PAR1) of X and Y chromosomes.,PTM:Extensively O-glycosylated.,similarity:Belongs to the CD99 family.,

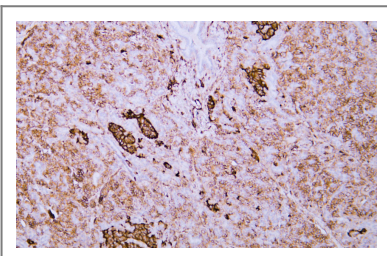
Validation Data



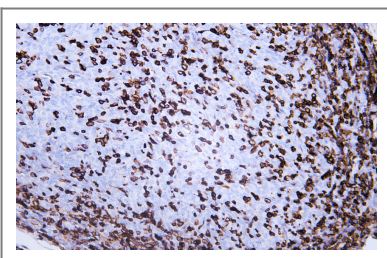
Human appendix tissue was stained with Anti-CD99 (ABT156) Antibody



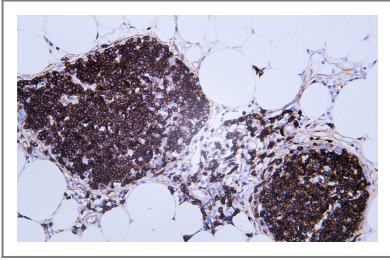
Human appendix tissue was stained with Anti-CD99 (ABT156) Antibody



Human pancreas tissue was stained with Anti-CD99 (ABT156) Antibody



Human thymoma tissue was stained with Anti-CD99 (ABT156) Antibody



Human thymus tissue was stained with Anti-CD99 (ABT156) Antibody

| Contact information

Orders: order@immunoway.com
Support: tech@immunoway.com
Telephone: 408-747-0189 (USA) 400-8787-807(China)
Website: <http://www.immunoway.com>
Address: 2200 Ringwood Ave San Jose, CA 95131 USA



Please scan the QR code
to access additional
product information:
**CD99 (ABT156) IHC
kit**

For Research Use Only. Not for Use in Diagnostic Procedures.

[Antibody](#) | [ELISA Kits](#) | [Protein](#) | [Reagents](#)