

## CD8 a (ABT155) IHC kit

CatalogNo: IHCM6846

### Key Features

#### Host Species

- Mouse

#### Reactivity

- Human,

#### Applications

- IHC

#### Isotype

- IgG2a,Kappa

### Recommended Dilution Ratios

### Storage

**Storage\*** 2°C to 8°C/1 year

### Basic Information

**Clonality** Monoclonal

**Clone Number** ABT155

### Immunogen Information

**Immunogen** Synthesized peptide derived from human CD8 a AA range: 100-235

**Specificity** The antibody can specifically recognize human CD8 protein, including two types of dimer:  $\alpha\beta$  heterodimer or  $\alpha\alpha$  homodimer.

### Target Information

**Gene name** CD8A MAL

**Protein Name** CD8 a

**Organism**

**Gene ID**

**UniProt ID**

Human

[925;](#)

[P01732;](#)

**Cellular Localization**

Membranous

**Tissue specificity**

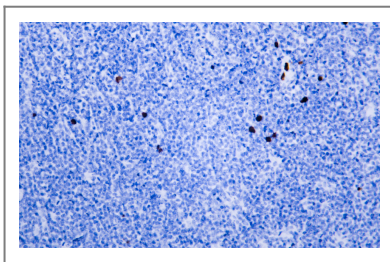
CD8 on thymus-derived T-cells usually consists of a disulfide-linked alpha/CD8A and a beta/CD8B chain. Less frequently, CD8 can be expressed as a CD8A homodimer. A subset of natural killer cells, memory T-cells, intraepithelial lymphocytes, monocytes and dendritic cells expresses CD8A homodimers. Expressed at the cell surface of plasmacytoid dendritic cells upon herpes simplex virus-1 stimulation.

**Function**

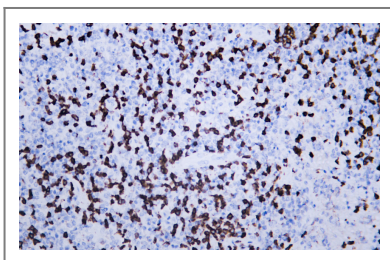
Disease:Defects in CD8A are a cause of familial CD8 deficiency (CD8 deficiency) [MIM:608957]. Familial CD8 deficiency is a novel autosomal recessive immunologic defect characterized by absence of CD8+ cells, leading to recurrent bacterial infections.,Function:Identifies cytotoxic/suppressor T-cells that interact with MHC class I bearing targets. CD8 is thought to play a role in the process of T-cell mediated killing. CD8 alpha chains binds to class I MHC molecules alpha-3 domains.,online information:CD8 entry,online information:CD8A mutation db,PTM:All of the five most carboxyl-terminal cysteines form inter-chain disulfide bonds in dimers and higher multimers, while the four N-terminal cysteines do not.,similarity:Contains 1 Ig-like V-type (immunoglobulin-like) domain.,subunit:In general heterodimer of an alpha and a beta chain linked by two disulfide bonds. Can also form homodimers. Shown to be expressed as heterdimer on thymocytes and as homodimer on peripheral blood T-lymphocytes. Interacts with the MHC class I HLA-A/B2M dimer. Interacts with LCK in a zinc-dependent manner.,

---

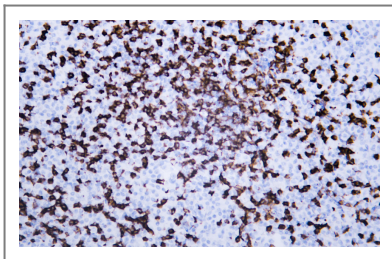
**Validation Data**



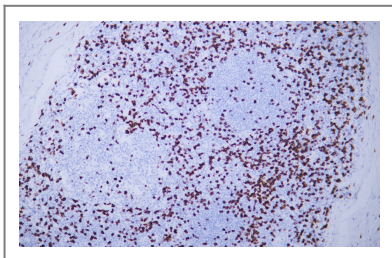
Human burkitt lymphoma tissue was stained with Anti-CD8 (ABT155) Antibody



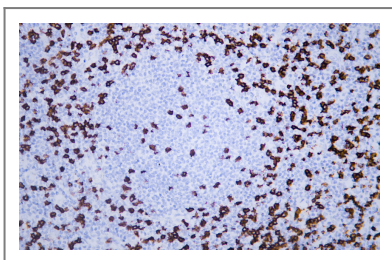
Human lymphoma tissue was stained with Anti-CD8 (ABT155) Antibody.



Human lymphoma tissue was stained with Anti-CD8 (ABT155) Antibody. Polymer HRP Goat Anti Mouse/Rabbit IgG(H+L) Antibody was used at 37°C 30 minutes.



Human tonsil tissue was stained with Anti-CD8 (ABT155) Antibody



Human tonsil tissue was stained with Anti-CD8 (ABT155) Antibody

## Contact information

Orders: [order@immunoway.com](mailto:order@immunoway.com)  
Support: [tech@immunoway.com](mailto:tech@immunoway.com)  
Telephone: 408-747-0189 (USA) 400-8787-807(China)  
Website: <http://www.immunoway.com>  
Address: 2200 Ringwood Ave San Jose, CA 95131 USA



Please scan the QR code to access additional product information:  
**CD8 a (ABT155) IHC kit**

For Research Use Only. Not for Use in Diagnostic Procedures.

[Antibody](#) | [ELISA Kits](#) | [Protein](#) | [Reagents](#)