

CD7 (ABT035) IHC kit

CatalogNo: IHCM6845

Key Features

Host Species

- Mouse

Reactivity

- Human,

Applications

- IHC

Isotype

- IgG2a,Kappa

Recommended Dilution Ratios

Storage

Storage* 2°C to 8°C/1 year

Basic Information

Clonality Monoclonal

Clone Number ABT035

Immunogen Information

Immunogen Synthesized peptide derived from human CD7 AA range: 1-100

Specificity The antibody can specifically recognize human CD7 protein.

Target Information

Gene name CD7

Protein Name CD7

Organism

Gene ID

UniProt ID

Human

[924;](#)

[P09564;](#)

Cellular Localization

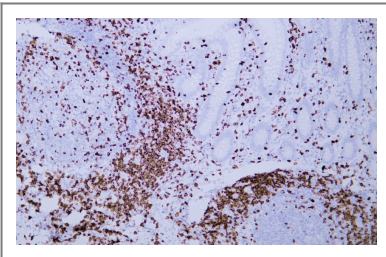
Membranous

Tissue specificity Membranous

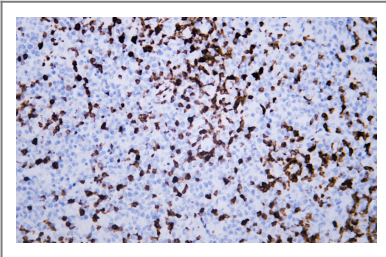
Function

Function:Not yet known.,similarity:Contains 1 Ig-like (immunoglobulin-like) domain.,subunit:Interacts with SECTM1.,

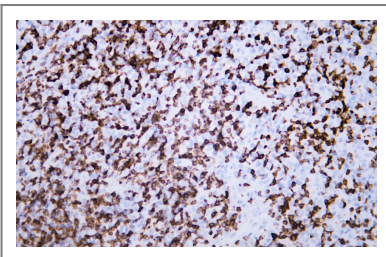
Validation Data



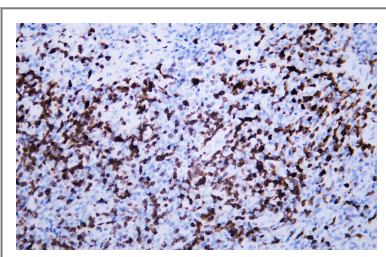
Human appendix tissue was stained with Anti-CD7 (ABT035) Antibody



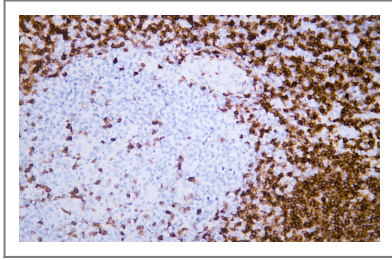
Human lymphoma tissue was stained with Anti-CD7 (ABT035) Antibody



Human lymphoma tissue was stained with Anti-CD7 (ABT035) Antibody



Human lymphoma tissue was stained with Anti-CD7 (ABT035) Antibody



Human tonsil tissue was stained with Anti-CD7 (ABT035) Antibody

Contact information

Orders: order@immunoway.com
Support: tech@immunoway.com
Telephone: 877-594-3616 (Toll Free), 408-747-0185
Website: <http://www.immunoway.com>
Address: 2200 Ringwood Ave San Jose, CA 95131 USA



Please scan the QR code
to access additional
product information:
**CD7 (ABT035) IHC
kit**

For Research Use Only. Not for Use in Diagnostic Procedures.

[Antibody](#) | [ELISA Kits](#) | [Protein](#) | [Reagents](#)