

CD38 (ABT298) IHC kit

CatalogNo: IHCM6840

Key Features

Host Species

- Mouse

Reactivity

- Human,

Applications

- IHC

Isotype

- IgG2b,Kappa

Recommended Dilution Ratios

Storage

Storage* 2°C to 8°C/1 year

Basic Information

Clonality Monoclonal

Clone Number ABT298

Immunogen Information

Immunogen Synthesized peptide derived from human CD38 AA range: 200-300

Specificity The antibody can specifically recognize human CD38 protein.

Target Information

Gene name CD38

Protein Name CD38

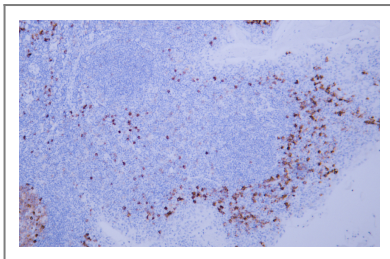
Organism	Gene ID	UniProt ID
Human	952 ;	P28907 ;

Cellular Localization Membranous

Tissue specificity Expressed at high levels in pancreas, liver, kidney, brain, testis, ovary, placenta, malignant lymphoma and neuroblastoma.

Function Catalytic activity:NAD(+) + H(2)O = ADP-ribose + nicotinamide.,developmental stage:Preferentially expressed at both early and late stages of the B and T-cell maturation. It is also detected on erythroid and myeloid progenitors in bone marrow, where the level of surface expression was shown to decrease during differentiation of blast-forming unit E to colony-forming unit E.,enzyme regulation:ATP inhibits the hydrolyzing activity.,Function:Synthesizes cyclic ADP-ribose, a second messenger for glucose-induced insulin secretion. Also has cADPr hydrolase activity. Also moonlights as a receptor in cells of the immune system.,online information:CD38 entry,similarity:Belongs to the ADP-ribosyl cyclase family.,tissue specificity:Expressed at high levels in pancreas, liver, kidney, brain, testis, ovary, placenta, malignant lymphoma and neuroblastoma.,

Validation Data



Human tonsil tissue was stained with Anti-CD38 (ABT298) Antibody

Contact information

Orders: order@immunoway.com
Support: tech@immunoway.com
Telephone: 408-747-0189 (USA) 400-8787-807(China)
Website: <http://www.immunoway.com>
Address: 2200 Ringwood Ave San Jose, CA 95131 USA



Please scan the QR code to access additional product information:
CD38 (ABT298) IHC kit