

CD3 (ABT295) IHC kit

CatalogNo: IHCM6839

Key Features

Host Species

- Mouse

Reactivity

- Human,

Applications

- IHC

Isotype

- IgG2a,Kappa

Recommended Dilution Ratios

Storage

Storage* 2°C to 8°C/1 year

Basic Information

Clonality Monoclonal

Clone Number ABT295

Immunogen Information

Immunogen Synthesized peptide derived from human CD3, CD3E AA range: 1-100

Specificity The antibody can specifically recognize human CD3e protein, and shows no reaction with CD3d or CD3g.

Target Information

Gene name CD3E T3E

Protein Name CD3, CD3E

Organism

Gene ID

UniProt ID

Human

[916](#);

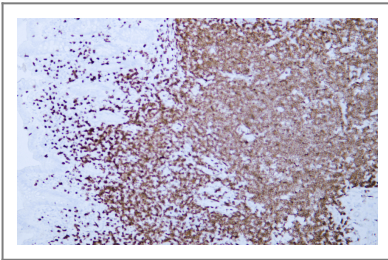
[P07766](#);

Cellular Localization Membranous

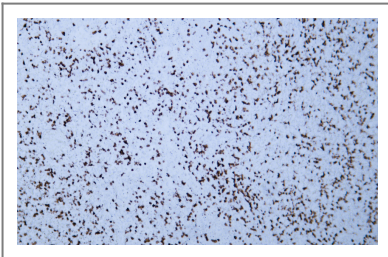
Tissue specificity Membranous

Function Function:The CD3 complex mediates signal transduction.,online information:CD3E mutation db,similarity:Contains 1 Ig-like (immunoglobulin-like) domain.,similarity:Contains 1 ITAM domain.,subunit:The TCR/CD3 complex of T-lymphocytes consists of either a TCR alpha/beta or TCR gamma/delta heterodimer coexpressed at the cell surface with the invariant subunits of CD3 labeled gamma, delta, epsilon, zeta, and eta.,

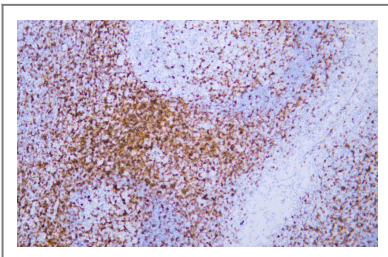
Validation Data



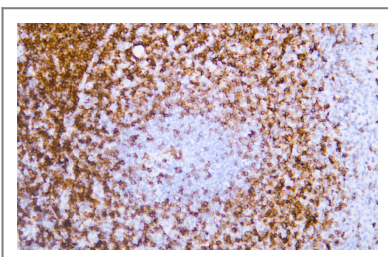
Human appendix tissue was stained with Anti-CD3 (ABT295) Antibody



Human spleen tissue was stained with Anti-CD3 (ABT295) Antibody



Human tonsil tissue was stained with Anti-CD3 (ABT295) Antibody



Human tonsil tissue was stained with Anti-CD3 (ABT295) Antibody

| Contact information

Orders: order@immunoway.com
Support: tech@immunoway.com
Telephone: 408-747-0189 (USA) 400-8787-807(China)
Website: <http://www.immunoway.com>
Address: 2200 Ringwood Ave San Jose, CA 95131 USA



Please scan the QR code
to access additional
product information:
**CD3 (ABT295) IHC
kit**

For Research Use Only. Not for Use in Diagnostic Procedures.

[Antibody](#) | [ELISA Kits](#) | [Protein](#) | [Reagents](#)