

CD20 (ABT065) IHC kit

CatalogNo: IHCM6832

Key Features

Host Species

- Mouse

Reactivity

- Human,

Applications

- IHC

Isotype

- IgG1,Kappa

Recommended Dilution Ratios

Storage

Storage* 2°C to 8°C/1 year

Basic Information

Clonality Monoclonal

Clone Number ABT065

Immunogen Information

Immunogen Synthesized peptide derived from human CD20 AA range: 200-297

Specificity The antibody can specifically recognize human CD20 protein.

Target Information

Gene name MS4A1 CD20

Protein Name CD20

Organism

Gene ID

UniProt ID

Human

[931](#);

[P11836](#);

Cellular Localization

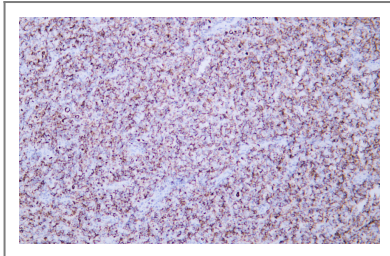
Membranous

Tissue specificity Expressed on B-cells.

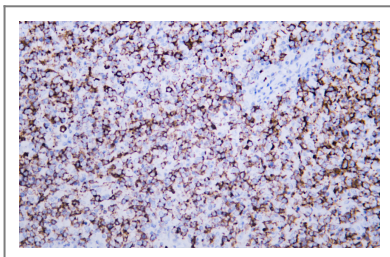
Function

Caution:Epitope 1, mapped in PubMed:16785532, is predicted to be buried in the membrane. Its accessibility to the extracellular space, and thus to antibody recognition, is not explained.,Function:This protein may be involved in the regulation of B-cell activation and proliferation.,online information:CD20 entry,pharmaceutical:Monoclonal antibodies(mAb) against CD20 are used to treat B-cell non-Hodgkin's lymphoma (NHL). These antibodies include Rituximab (Mabthera), Britumomab (Zevalin) and Tositumomab (Bexxar). CD20 engaged by mAb can generate transmembrane signals capable of directly controlling cell growth and triggering cell death in certain tumors. Alternatively, mAb can mediate complement-dependent cytotoxicity.,PTM:Phosphorylated. Might be functionally regulated by protein kinase(s),similarity:Belongs to the MS4A family.,tissue specificity:Expressed on B-cells.,

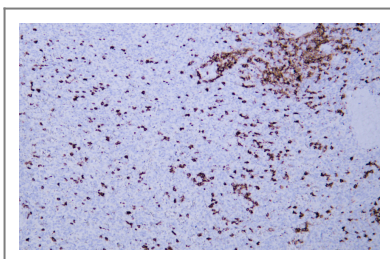
Validation Data



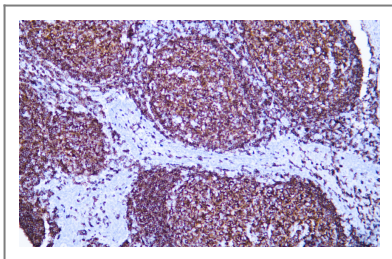
Human diffuse large B-cell lymphoma tissue was stained with Anti-CD20 (ABT065) Antibody



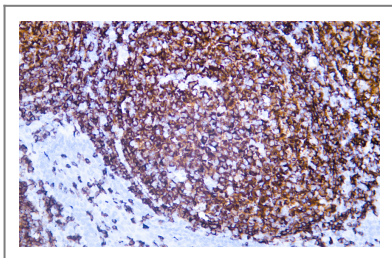
Human diffuse large B-cell lymphoma tissue was stained with Anti-CD20 (ABT065) Antibody



Human spleen tissue was stained with anti-CD20(ABT065) antibody.



Human tonsil tissue was stained with anti-CD20(ABT065) antibody.



Human tonsil tissue was stained with anti-CD20(ABT065) antibody.

Contact information

Orders: order@immunoway.com
Support: tech@immunoway.com
Telephone: 408-747-0189 (USA) 400-8787-807(China)
Website: <http://www.immunoway.com>
Address: 2200 Ringwood Ave San Jose, CA 95131 USA



Please scan the QR code
to access additional
product information:
**CD20 (ABT065) IHC
kit**

For Research Use Only. Not for Use in Diagnostic Procedures.

[Antibody](#) | [ELISA Kits](#) | [Protein](#) | [Reagents](#)