

CD141 (ABT145) IHC kit

CatalogNo: IHCM6830

Key Features

Host Species

- Mouse

Reactivity

- Human, Mouse, Rat,

Applications

- IHC

Isotype

- IgG2b, Kappa

Recommended Dilution Ratios

Storage

Storage* 2°C to 8°C/1 year

Basic Information

Clonality Monoclonal

Clone Number ABT145

Immunogen Information

Immunogen Synthesized peptide derived from human CD141 AA range: 50-150

Specificity The antibody can specifically recognize human CD141 protein.

Target Information

Gene name THBD THRM

Protein Name CD141

Organism

Human

Gene ID

[7056](#);

UniProt ID

[P07204](#);

Cellular Localization

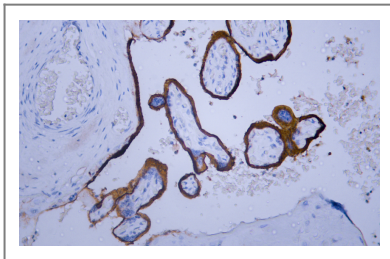
Membranous

Tissue specificity Endothelial cells are unique in synthesizing thrombomodulin.

Function

Disease:Defects in THBD are the cause of thrombophilia due to thrombomodulin defect (THR-THBDD) [MIM:188040]. THR-THBDD is a hemostatic disorder characterized by a tendency to thrombosis.,Function:Thrombomodulin is a specific endothelial cell receptor that forms a 1:1 stoichiometric complex with thrombin. This complex is responsible for the conversion of protein C to the activated protein C (protein Ca). Once evolved, protein Ca scissions the activated cofactors of the coagulation mechanism, factor Va and factor VIIIa, and thereby reduces the amount of thrombin generated.,online information:Thrombomodulin,online information:Thrombomodulin entry,PTM:N-glycosylated.,PTM:The iron and 2-oxoglutarate dependent 3-hydroxylation of aspartate and asparagine is (R) stereospecific within EGF domains.,similarity:Contains 1 C-type lectin domain.,similarity:Contains 6 EGF-like domains.,tissue specificity:Endothelial cells are unique in synthesizing thrombomodulin.,

Validation Data



Human placenta tissue was stained with anti-CD141(ABT145) antibody.

Contact information

Orders: order@immunoway.com
Support: tech@immunoway.com
Telephone: 408-747-0189 (USA) 400-8787-807(China)
Website: <http://www.immunoway.com>
Address: 2200 Ringwood Ave San Jose, CA 95131 USA



Please scan the QR code to access additional product information:
CD141 (ABT145) IHC kit