

Calcitonin (ABT285) IHC kit

CatalogNo: IHCM6825

Key Features

Host Species

- Mouse

Reactivity

- Human,

Applications

- IHC

Isotype

- IgG2a,Kappa

Recommended Dilution Ratios

Storage

Storage* 2°C to 8°C/1 year

Basic Information

Clonality Monoclonal

Clone Number ABT285

Immunogen Information

Immunogen Synthesized peptide derived from human Calcitonin AA range: 26-141

Specificity The antibody can specifically recognize human Calcitonin protein.

Target Information

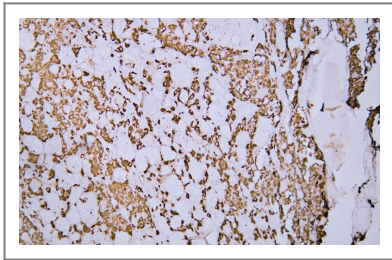
Gene name CALCA CALC1

| | | | |
|---------------------|-----------------|----------------------|-------------------------|
| Protein Name | Calcitonin | | |
| | Organism | Gene ID | UniProt ID |
| | Human | 796; | P01258; |

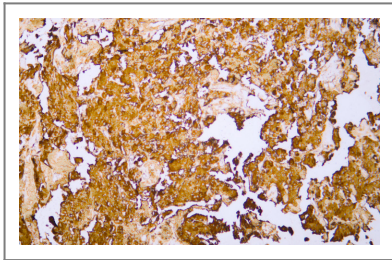
Cellular Localization Cytoplasmic

Function Function:Calcitonin causes a rapid but short-lived drop in the level of calcium and phosphate in blood by promoting the incorporation of those ions in the bones.,Function:CGRP induces vasodilation. It dilates a variety of vessels including the coronary, cerebral and systemic vasculature. Its abundance in the CNS also points toward a neurotransmitter or neuromodulator role. It also elevates platelet cAMP.,Function:Katacalcin is a potent plasma calcium-lowering peptide.,online information:Calcitonin entry,similarity:Belongs to the calcitonin family.,

Validation Data



Human thyroid atypical adenoma tissue was stained with anti-Calcitonin(ABT285) antibody.



Human thyroid medullary carcinoma tissue was stained with anti-Calcitonin(ABT285) antibody.

Contact information

Orders: order@immunoway.com
 Support: tech@immunoway.com
 Telephone: 408-747-0189 (USA) 400-8787-807(China)
 Website: <http://www.immunoway.com>
 Address: 2200 Ringwood Ave San Jose, CA 95131 USA



Please scan the QR code to access additional product information:
Calcitonin (ABT285)
IHC kit