

CD14 (ABT021) IHC kit

CatalogNo: IHCM6816

Key Features

Host Species

- Mouse

Reactivity

- Human,

Applications

- IHC

Isotype

- IgG2b,Kappa

Recommended Dilution Ratios

Storage

Storage* 2°C to 8°C/1 year

Basic Information

Clonality Monoclonal

Clone Number ABT021

Immunogen Information

Immunogen Synthesized peptide derived from human CD14 AA range: 1-100

Specificity The antibody can specifically recognize human CD14 protein.

Target Information

Gene name CD14

Protein Name CD14

Organism

Gene ID

UniProt ID

Human

[929](#);

[P08571](#);

Cellular Localization

Membranous, Cytoplasmic

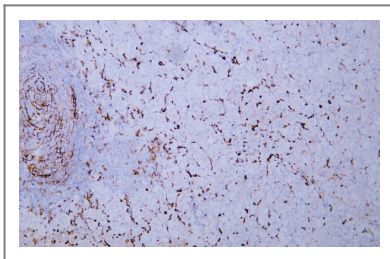
Tissue specificity

Detected on macrophages (at protein level) (PubMed:1698311). Expressed strongly on the surface of monocytes and weakly on the surface of granulocytes; also expressed by most tissue macrophages.

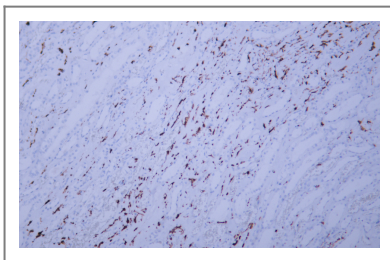
Function

Function:Cooperates with MD-2 and TLR4 to mediate the innate immune response to bacterial lipopolysaccharide (LPS). Acts via MyD88, TIRAP and TRAF6, leading to NF-kappa-B activation, cytokine secretion and the inflammatory response. Up-regulates cell surface molecules, including adhesion molecules.,online information:CD14 entry,similarity:Contains 11 LRR (leucine-rich) repeats.,subunit:Belongs to the lipopolysaccharide (LPS) receptor, a multi-protein complex containing at least CD14, MD-2 and TLR4.,tissue specificity:Expressed strongly on the surface of monocytes and weakly on the surface of granulocytes; also expressed by most tissue macrophages.,

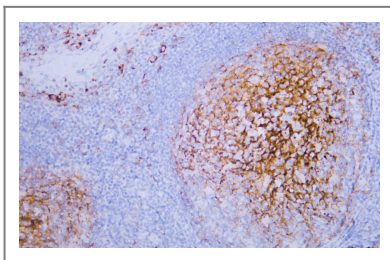
Validation Data



Human adrenal gland tissue was stained with anti-CD14(ABT021) antibody.



Human kidney tissue was stained with anti-CD14(ABT021) antibody.



Human tonsil tissue was stained with anti-CD14(ABT021) antibody.

| Contact information

Orders: order@immunoway.com
Support: tech@immunoway.com
Telephone: 408-747-0189 (USA) 400-8787-807(China)
Website: <http://www.immunoway.com>
Address: 2200 Ringwood Ave San Jose, CA 95131 USA



Please scan the QR code
to access additional
product information:
**CD14 (ABT021) IHC
kit**

For Research Use Only. Not for Use in Diagnostic Procedures.

[Antibody](#) | [ELISA Kits](#) | [Protein](#) | [Reagents](#)