

Cytokeratin (ABT154) IHC kit

CatalogNo: IHCM6815

Key Features

Host Species

- Mouse

Reactivity

- Human, Mouse, Rat,

Applications

- IHC

Isotype

- IgG1, Kappa

Recommended Dilution Ratios

Storage

Storage* 2°C to 8°C/1 year

Basic Information

Clonality Monoclonal

Clone Number ABT154

Immunogen Information

Immunogen Synthesized peptide derived from human Cytokeratin Pan AA range: 100-200

Specificity The antibody can recognize multiple human Cytokeratins, including CK10, 13, 14, 15, 16, 18, 19, and it can be used for immunohistochemical detection of tumors from monolayer and multilayered epithelium.

Target Information

Gene name CK pan; CK-pan

Protein Name Cytokeratin Pan

Organism **Gene ID**

UniProt ID

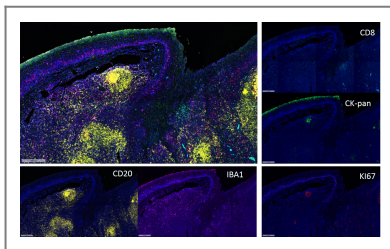
Human

[P13645](#); [P13646](#); [P02533](#); [P19012](#); [P08779](#); [P08727](#);

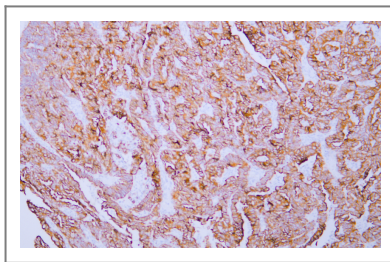
Cellular Localization Cytoplasmic, Membranous

Tissue specificity Non-neural epithelial tissues.

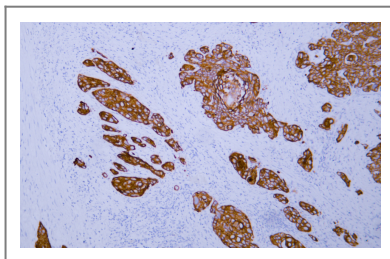
Validation Data



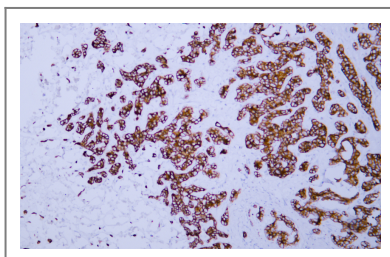
Fluorescence multiplex immunohistochemical analysis of Human tonsil tissue (formalin-fixed paraffin-embedded section). The immunostaining was performed by Pentuple-Fluorescence kit (RS0038, Immunoway). CK-pan mouse mAb(YM6815 Immunoway) green, Ki-67 rabbit mAb(YM7002 Immunoway) red, Iba 1 mouse mAb(YM4765 Immunoway) purple, CD8 a mouse mAb(YM4815 Immunoway) cyan, CD20 mouse mAb(YM4814 Immunoway) yellow, The section was incubated in 5 rounds of staining; sequentially for Anti-antibodies; each using a separate fluorescent tyramide signal amplification system. EDTA based antigen retrieval (Immunoway YS0004, pH 9.0, 20 minutes) was used in between rounds of tyramide signal amplification to remove the antibody from the previous round, to avoid any cross-reactivity. DAPI (dark blue) was used as a nuclear counter stain. Microscopy and pseudocoloring of individual dyes was performed using a Slideviewer Imaging System (Excilone).



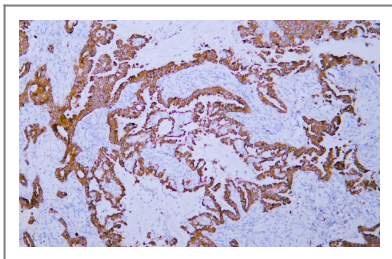
Human endometrial adenocarcinoma tissue was stained with Anti-Cytokeratin (ABT154) Antibody



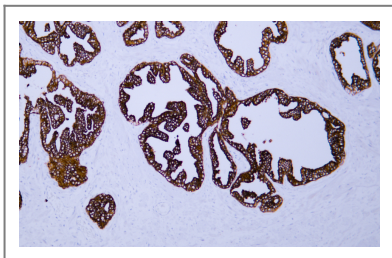
Human esophageal squamous cell carcinoma tissue was stained with Anti-Cytokeratin (ABT154) Antibody



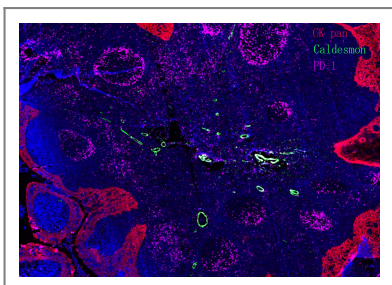
Human hepatocellular carcinoma tissue was stained with Anti-Cytokeratin (ABT154) Antibody



Human lung adenocarcinoma tissue was stained with Anti-Cytokeratin (ABT154) Antibody



Human prostate tissue was stained with Anti-Cytokeratin (ABT154) Antibody



Fluorescence multiplex immunohistochemical analysis of normal human appendix tissue (formalin-fixed paraffin-embedded section).The section was incubated in 3 rounds of staining; in the order of CK PAN .(Catalog no:YM6815 1/200 dilution), PD-1.(Catalog no: YM6208 1/200 dilution), Caldesmon pan. (Catalog no:YM6826 1/200 dilution),each using a separate fluorescent tyramide signal amplification system : Treble-Fluorescence immunohistochemical mouse/rabbit kit Catalog NO: RS0035 (pH9.0)

Contact information

Orders: order@immunoway.com
Support: tech@immunoway.com
Telephone: 408-747-0189 (USA) 400-8787-807(China)
Website: <http://www.immunoway.com>
Address: 2200 Ringwood Ave San Jose, CA 95131 USA



Please scan the QR code to access additional product information:
Cytokeratin (ABT154) IHC kit

For Research Use Only. Not for Use in Diagnostic Procedures.

[Antibody](#) | [ELISA Kits](#) | [Protein](#) | [Reagents](#)