

## GST-Pi (ABT-GSTP1) IHC kit

CatalogNo: IHCM6765

### Key Features

#### Host Species

- Mouse

#### Reactivity

- Human,

#### Applications

- IHC

#### Isotype

- IgG1,Kappa

### Recommended Dilution Ratios

### Storage

**Storage\*** 2°C to 8°C/1 year

### Basic Information

**Clonality** Monoclonal

**Clone Number** ABT-GSTP1

### Immunogen Information

**Immunogen** Synthesized peptide derived from human GST-Pi AA range: 150-210

**Specificity** The antibody can specifically recognize human GST-Pi protein.

### Target Information

**Gene name** GSTP1 FAES3 GST3

**Protein Name** GST-Pi

**Organism**

**Gene ID**

**UniProt ID**

Human

[2950;](#)

[P09211;](#)

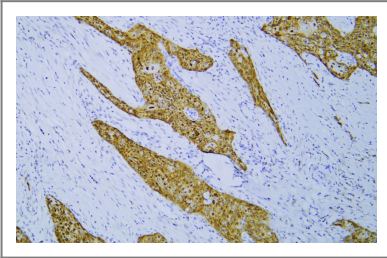
**Cellular Localization**

Cytoplasmic

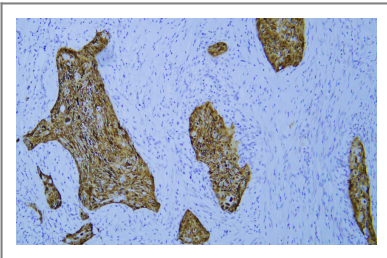
**Function**

Catalytic activity:RX + glutathione = HX + R-S-glutathione.,Function:Conjugation of reduced glutathione to a wide number of exogenous and endogenous hydrophobic electrophiles.,online information:The Singapore human mutation and polymorphism database,similarity:Belongs to the GST superfamily. Pi family.,similarity:Contains 1 GST C-terminal domain.,similarity:Contains 1 GST N-terminal domain.,subunit:Homodimer.,

## Validation Data



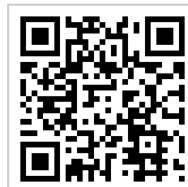
Human esophageal squamous cell carcinoma tissue was stained with Anti-GST-Pi (ABT-GSTP1) Antibody



Human esophageal squamous cell carcinoma tissue was stained with Anti-GST-Pi (ABT-GSTP1) Antibody

## Contact information

Orders: [order@immunoway.com](mailto:order@immunoway.com)  
Support: [tech@immunoway.com](mailto:tech@immunoway.com)  
Telephone: 408-747-0189 (USA) 400-8787-807(China)  
Website: <http://www.immunoway.com>  
Address: 2200 Ringwood Ave San Jose, CA 95131 USA



Please scan the QR code to access additional product information:  
**GST-Pi (ABT-GSTP1) IHC kit**