

## Myoglobin (ABT-MYG) IHC kit

CatalogNo: IHCM6761

### Key Features

#### Host Species

- Mouse

#### Reactivity

- Human, Mouse, Rat,

#### Applications

- IHC

#### Isotype

- IgG1, Kappa

### Recommended Dilution Ratios

### Storage

**Storage\*** 2°C to 8°C/1 year

### Basic Information

**Clonality** Monoclonal

**Clone Number** ABT-MYG

### Immunogen Information

**Immunogen** Synthesized peptide derived from human Myoglobin AA range: 50-154

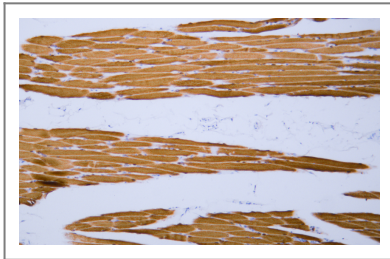
**Specificity** The antibody can specifically recognize human Myoglobin protein.

### Target Information

**Gene name** MB

<b>Protein Name</b>	Myoglobin		
	<b>Organism</b>	<b>Gene ID</b>	<b>UniProt ID</b>
	Human	<a href="#">4151</a> ;	<a href="#">P02144</a> ;
<b>Cellular Localization</b>	Cytoplasmic		
<b>Function</b>	Function:Serves as a reserve supply of oxygen and facilitates the movement of oxygen within muscles.,similarity:Belongs to the globin family.,		

## Validation Data



Human skeletal muscle tissue was stained with Anti-Myoglobin (ABT-MYG) Antibody



Human skeletal muscle tissue was stained with Anti-Myoglobin (ABT-MYG) Antibody

## Contact information

Orders: [order@immunoway.com](mailto:order@immunoway.com)  
 Support: [tech@immunoway.com](mailto:tech@immunoway.com)  
 Telephone: 408-747-0189 (USA) 400-8787-807(China)  
 Website: <http://www.immunoway.com>  
 Address: 2200 Ringwood Ave San Jose, CA 95131 USA



Please scan the QR code to access additional product information:  
**Myoglobin (ABT-MYG) IHC kit**

For Research Use Only. Not for Use in Diagnostic Procedures.

[Antibody](#) | [ELISA Kits](#) | [Protein](#) | [Reagents](#)