

# Proliferating Cell Nuclear Antigen (ABT221) IHC kit

CatalogNo: IHCM6705

## Key Features

### Host Species

- Mouse

### Reactivity

- Human, Mouse, Rat,

### Applications

- IHC

### Isotype

- IgG2b, Kappa

## Recommended Dilution Ratios

## Storage

**Storage\*** 2°C to 8°C/1 year

## Basic Information

**Clonality** Monoclonal

**Clone Number** ABT221

## Immunogen Information

**Immunogen** Synthesized peptide derived from human Proliferating Cell Nuclear Antigen AA range: 1-100

**Specificity** The antibody can specifically recognize human PCNA protein.

## Target Information

**Gene name** PCNA

**Protein Name** ATLD2;cb16;Cyclin;DNA polymerase delta auxiliary protein;etID36690.10;fa28e03;fb36g03;HGNC8729;MGC8367;Mutagen-sensitive 209 protein;OTTHUMP00000030189;OTTHUMP00000030190;PCNA;Pcna/cyclin;PCNA\_HUMAN;PCNAR;Polymerase delta accessory protein;Proliferating cell nuclear antigen;wu:fa28e03;wu:fb36g03

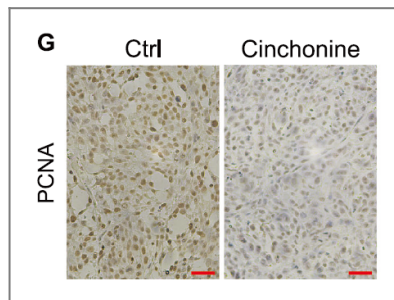
Organism	Gene ID	UniProt ID
Human	<a href="#">5111;</a>	<a href="#">P12004;</a>
Mouse		<a href="#">P17918;</a>
Rat		<a href="#">P04961;</a>

**Cellular Localization** Nuclear

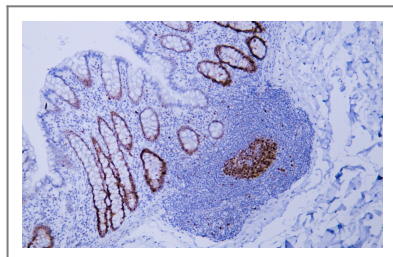
**Tissue specificity** Tonsil/ Colon

**Function** Disease:Antibodies are present in sera from patients with systemic lupus erythematosus.,Function:This protein is an auxiliary protein of DNA polymerase delta and is involved in the control of eukaryotic DNA replication by increasing the polymerase's processibility during elongation of the leading strand.,online information:PCNA entry,PTM:Upon methyl methanesulfonate-induced DNA damage, mono-ubiquitinated by the UBE2B-RAD18 complex on Lys-164. This induces non-canonical poly-ubiquitination on Lys-164 through 'Lys-63' linkage of ubiquitin moieties by the E2 complex UBE2N-UBE2V2 and the E3 ligases RNF8 and SHPRH, which are required for DNA repair.,similarity:Belongs to the PCNA family.,subunit:Homotrimer. Interacts with KCTD10. Interacts with PPP1R15A (By similarity). Forms a complex with activator 1 heteropentamer in the presence of ATP. Interacts with POLH, POLK, DNMT1, ERCC5/XPG, FEN1, CDC6, APEX2 and POLDIP2. Interacts with EXO1 and SHPRH. Forms a ternary complex with DNTTIP2 and core histone. Interacts with POLD1, POLD3 and POLD4. Interacts with BAZ1B/WSTF; the interaction is direct.,

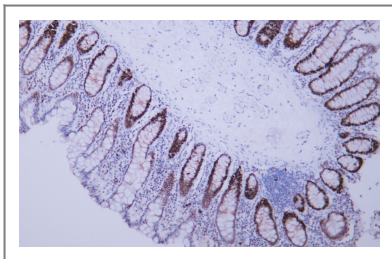
## Validation Data



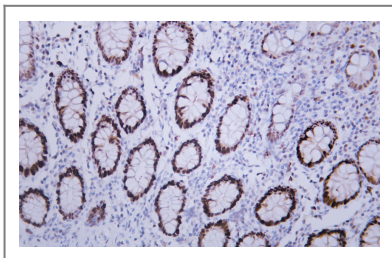
TRAF6 regulates autophagy and apoptosis of melanoma cells through c-Jun/ATG16L2 signaling pathway. Cong Peng IHC Mouse 1:350 SK-Mel-5 cell-xenograft



Human colon tissue was stained with Anti-Proliferating Cell Nuclear Antigen (ABT221) Antibody



Human colon tissue was stained with Anti-Proliferating Cell Nuclear Antigen (ABT221) Antibody



Human colon tissue was stained with Anti-Proliferating Cell Nuclear Antigen (ABT221) Antibody

## Contact information

Orders: [order@immunoway.com](mailto:order@immunoway.com)  
Support: [tech@immunoway.com](mailto:tech@immunoway.com)  
Telephone: 408-747-0189 (USA) 400-8787-807(China)  
Website: <http://www.immunoway.com>  
Address: 2200 Ringwood Ave San Jose, CA 95131 USA



Please scan the QR code to access additional product information:  
**Proliferating Cell Nuclear Antigen (ABT221) IHC kit**

For Research Use Only. Not for Use in Diagnostic Procedures.

[Antibody](#) | [ELISA Kits](#) | [Protein](#) | [Reagents](#)