

## Melan-A (ABT-Mart1) IHC kit

CatalogNo: IHCM6702

### Key Features

#### Host Species

- Mouse

#### Reactivity

- Human,

#### Applications

- IHC

#### Isotype

- IgG2b,Kappa

### Recommended Dilution Ratios

### Storage

**Storage\*** 2°C to 8°C/1 year

### Basic Information

**Clonality** Monoclonal

**Clone Number** ABT-Mart1

### Immunogen Information

**Immunogen** Synthesized peptide derived from human Mart-1/Melan-A AA range: 50-118

**Specificity** The antibody can specifically recognize human Melan-A protein.

### Target Information

**Gene name** MLANA MART1

**Protein Name** Mart-1/Melan-A

**Organism**

**Gene ID**

**UniProt ID**

Human

[2315;](#)

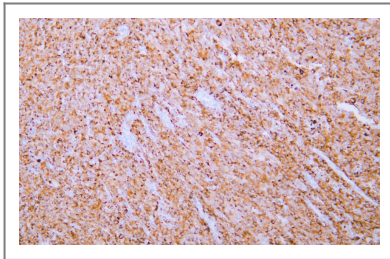
[Q16655;](#)

**Cellular Localization** Cytoplasmic

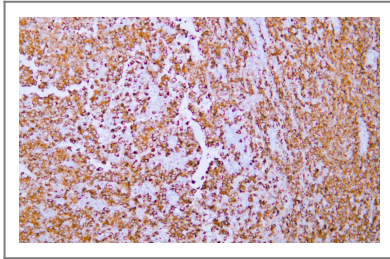
**Tissue specificity** Expression is restricted to melanoma and melanocyte cell lines and retina.

**Function** tissue specificity:Expression is restricted to melanoma and melanocyte cell lines and retina.,

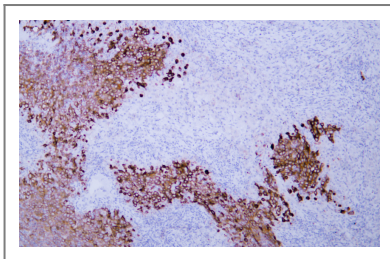
## Validation Data



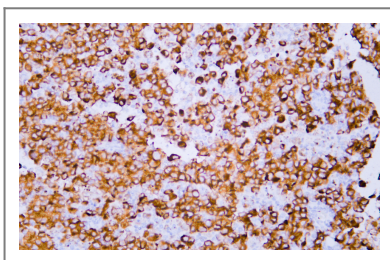
Human malignant melanoma tissue was stained with Anti-Melan-A (ABT-Mart1) Antibody



Human malignant melanoma tissue was stained with Anti-Melan-A (ABT-Mart1) Antibody



Human malignant melanoma tissue was stained with Anti-Melan-A (ABT-Mart1) Antibody



Human malignant melanoma tissue was stained with Anti-Melan-A (ABT-Mart1) Antibody

## | Contact information

Orders: order@immunoway.com  
Support: tech@immunoway.com  
Telephone: 408-747-0189 (USA) 400-8787-807(China)  
Website: <http://www.immunoway.com>  
Address: 2200 Ringwood Ave San Jose, CA 95131 USA



Please scan the QR code to access additional product information:  
**Melan-A (ABT-Mart1) IHC kit**

---

For Research Use Only. Not for Use in Diagnostic Procedures.

[Antibody](#) | [ELISA Kits](#) | [Protein](#) | [Reagents](#)