

Napsin A (PT2252) IHC kit

CatalogNo: IHCM6695

Key Features

Host Species

- Mouse

Reactivity

- Human,

Applications

- IHC

Isotype

- IgG1,Kappa

Recommended Dilution Ratios

Storage

Storage* 2°C to 8°C/1 year

Basic Information

Clonality Monoclonal

Clone Number PT2252

Immunogen Information

Immunogen Synthesized peptide derived from human Napsin A AA range: 100-200

Specificity This antibody detects endogenous levels of Napsin A protein.

Target Information

Gene name NAPSA NAP1 NAPA

Protein Name Napsin A

Organism

Gene ID

UniProt ID

Human

[9476;](#)

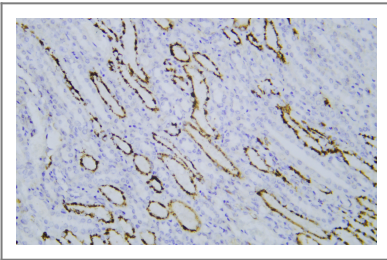
[O96009;](#)

Cellular Localization Cytoplasmic

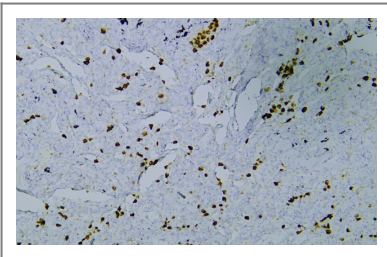
Tissue specificity Expressed predominantly in adult lung (type II pneumocytes) and kidney and in fetal lung. Low levels in adult spleen and very low levels in peripheral blood leukocytes.

Function Function:May be involved in processing of pneumocyte surfactant precursors.,similarity:Belongs to the peptidase A1 family.,tissue specificity:Expressed predominantly in adult lung (type II pneumocytes) and kidney and in fetal lung. Low levels in adult spleen and very low levels in peripheral blood leukocytes.,

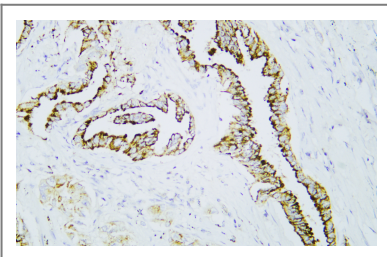
Validation Data



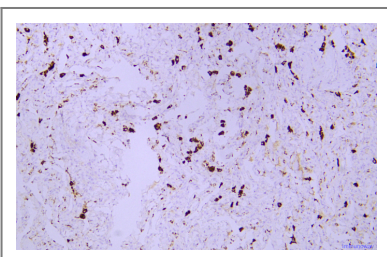
Human kidney tissue was stained with Anti-Napsin A (PT2252) Antibody



Human lung tissue was stained with Anti-Napsin A (PT2252) Antibody



Human lung adenocarcinoma tissue was stained with Anti-Napsin A (PT2252) Antibody



Immunohistochemical analysis of paraffin-embedded human lung Antibody was diluted at 1:200(4° overnight).

| Contact information

Orders: order@immunoway.com
Support: tech@immunoway.com
Telephone: 408-747-0189 (USA) 400-8787-807(China)
Website: <http://www.immunoway.com>
Address: 2200 Ringwood Ave San Jose, CA 95131 USA



Please scan the QR code
to access additional
product information:
Napsin A (PT2252)
IHC kit

For Research Use Only. Not for Use in Diagnostic Procedures.

[Antibody](#) | [ELISA Kits](#) | [Protein](#) | [Reagents](#)