

## PAX-5 (PTR1332) IHC kit

CatalogNo: IHCM6693

### Key Features

#### Host Species

- Mouse

#### Reactivity

- Human, Mouse, Rat,

#### Applications

- IHC

#### Isotype

- IgG

### Recommended Dilution Ratios

### Storage

**Storage\*** 2°C to 8°C/1 year

### Basic Information

**Clonality** Monoclonal

**Clone Number** PTR1332

### Immunogen Information

**Immunogen** Synthesized peptide derived from human PAX-5 AA range:300-383

**Specificity** This antibody detects endogenous levels of PAX-5 protein.

### Target Information

**Gene name** PAX5

**Protein Name** PAX-5

**Organism**

**Gene ID**

**UniProt ID**

Human

[5079](#);

[Q02548](#);

Mouse

[18507](#);

[Q02650](#);

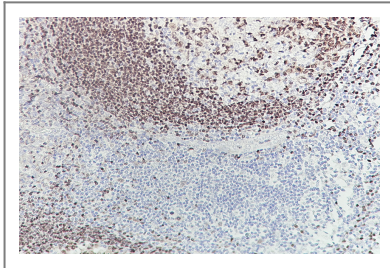
**Cellular Localization**

Nuclear

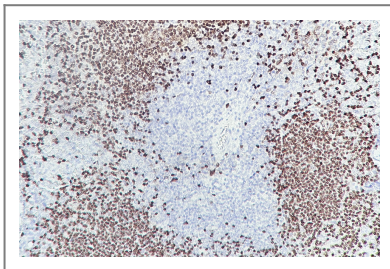
**Function**

developmental stage:Expressed at early B-cell differentiation, in the developing CNS and in adult testis.,Disease:A chromosomal aberration involving PAX5 is a cause of acute lymphoblastic leukemia. Translocation t(9;18)(p13;q11.2) with ZNF521. Translocation t(9;3)(p13;p14.1) with FOXP1. Translocation t(9;12)(p13;p13) with ETV6.,Function:May play an important role in B-cell differentiation as well as neural development and spermatogenesis. Involved in the regulation of the CD19 gene, a B-lymphoid-specific target gene.,PTM:O-glycosylated.,similarity:Contains 1 paired domain.,subunit:Interacts with DAXX (By similarity). Binds DNA as a monomer. Binds TLE4.,

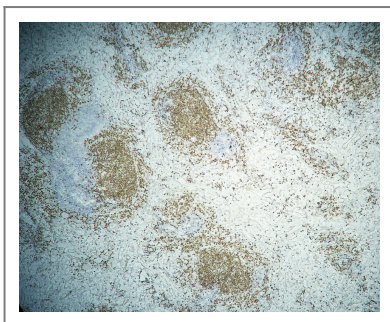
## Validation Data



Human tonsil tissue was stained with Anti-PAX-5 (PTR1332) Antibody



Mouse spleen tissue was stained with Anti-PAX-5 (PTR1332) Antibody



Rat spleen tissue was stained with Anti-PAX-5 (PTR1332) Antibody

## | Contact information

Orders: order@immunoway.com  
Support: tech@immunoway.com  
Telephone: 408-747-0189 (USA) 400-8787-807(China)  
Website: <http://www.immunoway.com>  
Address: 2200 Ringwood Ave San Jose, CA 95131 USA



Please scan the QR code  
to access additional  
product information:  
**PAX-5 (PTR1332)**  
**IHC kit**

---

For Research Use Only. Not for Use in Diagnostic Procedures.

[Antibody](#) | [ELISA Kits](#) | [Protein](#) | [Reagents](#)