

Napsin A (ABT-ASP4) IHC kit

CatalogNo: IHCM6692

Key Features

Host Species

- Mouse

Reactivity

- Human, Mouse,

Applications

- IHC

Isotype

- IgG1, Kappa

Recommended Dilution Ratios

Storage

Storage* 2°C to 8°C/1 year

Basic Information

Clonality Monoclonal

Clone Number ABT-ASP4

Immunogen Information

Immunogen Synthesized peptide derived from human Napsin A AA range: 100-200

Specificity The antibody can specifically recognize human Napsin A protein.

Target Information

Gene name NAPSA NAP1 NAPA

Protein Name Napsin A

Organism

Gene ID

UniProt ID

Human

[9476;](#)

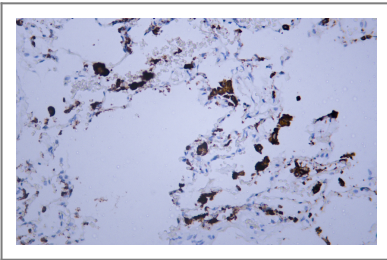
[O96009;](#)

Cellular Localization Cytoplasmic

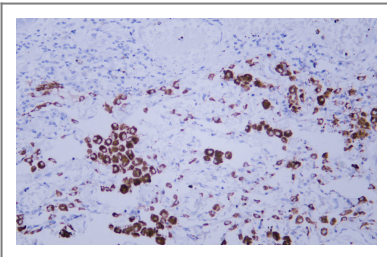
Tissue specificity Expressed predominantly in adult lung (type II pneumocytes) and kidney and in fetal lung. Low levels in adult spleen and very low levels in peripheral blood leukocytes.

Function Function:May be involved in processing of pneumocyte surfactant precursors.,similarity:Belongs to the peptidase A1 family.,tissue specificity:Expressed predominantly in adult lung (type II pneumocytes) and kidney and in fetal lung. Low levels in adult spleen and very low levels in peripheral blood leukocytes.,

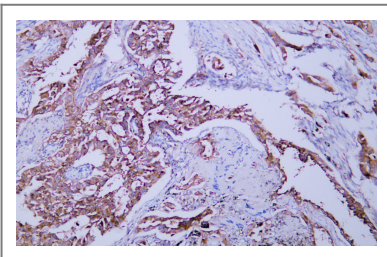
Validation Data



Human lung tissue was stained with Anti-Napsin A (ABT-ASP4) Antibody



Human lung adenocarcinoma tissue was stained with Anti-Napsin A (ABT-ASP4) Antibody



Human lung adenocarcinoma tissue was stained with Anti-Napsin A (ABT-ASP4) Antibody

Contact information

Orders: order@immunoway.com
Support: tech@immunoway.com
Telephone: 408-747-0189 (USA) 400-8787-807(China)
Website: http://www.immunoway.com
Address: 2200 Ringwood Ave San Jose, CA 95131 USA



Please scan the QR code to access additional product information:
Napsin A (ABT-ASP4) IHC kit

For Research Use Only. Not for Use in Diagnostic Procedures.

[Antibody](#) | [ELISA Kits](#) | [Protein](#) | [Reagents](#)