

## Arginase-1 (ABT-Arg1) IHC kit

CatalogNo: IHCM6684

### Key Features

#### Host Species

- Mouse

#### Reactivity

- Human,

#### Applications

- IHC

#### Isotype

- IgG2b,Kappa

### Recommended Dilution Ratios

### Storage

**Storage\*** 2°C to 8°C/1 year

### Basic Information

**Clonality** Monoclonal

**Clone Number** ABT-Arg1

### Immunogen Information

**Immunogen** Synthesized peptide derived from human Arginase-1 AA range: 200-322

**Specificity** The antibody can specifically recognize human Arginase-1 protein.

### Target Information

**Gene name** ARG1

**Protein Name** Arginase-1 (Liver-type arginase) (Type I arginase)

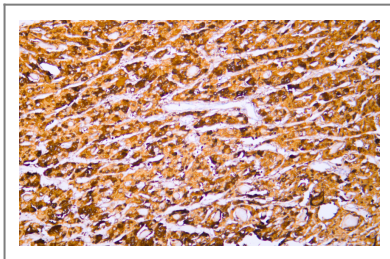
Organism	Gene ID	UniProt ID
Human	<a href="#">383</a> ;	<a href="#">P05089</a> ;

**Cellular Localization** Nuclear, Cytoplasmic

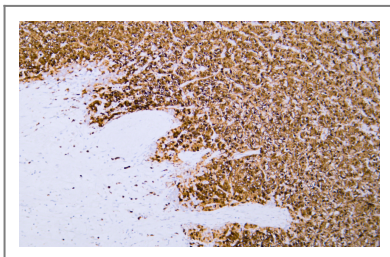
**Tissue specificity** Within the immune system initially reported to be selectively expressed in granulocytes (polymorphonuclear leukocytes [PMNs]) (PubMed:15546957). Also detected in macrophages mycobacterial granulomas (PubMed:23749634). Expressed in group2 innate lymphoid cells (ILC2s) during lung disease (PubMed:27043409).

**Function** Catalytic activity:L-arginine + H<sub>2</sub>O = L-ornithine + urea.,cofactor: Binds 2 manganese ions per subunit.,Disease: Defects in ARG1 are the cause of argininemia (ARGIN) [MIM:207800]; also known as hyperargininemia. Argininemia is a rare autosomal recessive disorder of the urea cycle. Arginine is elevated in the blood and cerebrospinal fluid, and periodic hyperammonemia occurs. Clinical manifestations include developmental delay, seizures, mental retardation, hypotonia, ataxia, progressive spastic quadriplegia.,induction: By arginine or homoarginine.,online information: Arginase entry, pathway: Nitrogen metabolism; urea cycle; L-ornithine and urea from L-arginine: step 1/1.,similarity: Belongs to the arginase family.,subunit: Homotrimer.,

## Validation Data



Human hepatocellular carcinoma tissue was stained with anti-Arginase-1 (ABT-Arg1) antibody.



Human hepatocellular carcinoma tissue was stained with anti-Arginase-1 (ABT-Arg1) antibody.

## Contact information

Orders: order@immunoway.com  
Support: tech@immunoway.com  
Telephone: 408-747-0189 (USA) 400-8787-807(China)  
Website: http://www.immunoway.com  
Address: 2200 Ringwood Ave San Jose, CA 95131 USA



Please scan the QR code to access additional product information:  
**Arginase-1 (ABT-Arg1) IHC kit**

---

For Research Use Only. Not for Use in Diagnostic Procedures.

[Antibody](#) | [ELISA Kits](#) | [Protein](#) | [Reagents](#)