

COX-2 (ABT-COX2) IHC kit

CatalogNo: IHCM6677

Key Features

Host Species

- Mouse

Reactivity

- Human,

Applications

- IHC

Isotype

- IgG2b,Kappa

Recommended Dilution Ratios

Storage

Storage* 2°C to 8°C/1 year

Basic Information

Clonality Monoclonal

Clone Number ABT-COX2

Immunogen Information

Immunogen Synthesized peptide derived from human COX-2 (cyclooxygenase-2) AA range: 500-604

Specificity The antibody can specifically recognize human COX-2 protein.

Target Information

Gene name PTGS2 COX2

Protein Name Prostaglandin G/H synthase 2 (Cyclooxygenase-2) (COX-2) (PHS II) (Prostaglandin H2 synthase 2) (PGH synthase 2) (PGHS-2) (Prostaglandin-endoperoxide synthase 2)

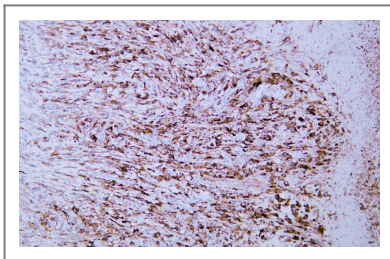
Organism	Gene ID	UniProt ID
Human	5743 ;	P35354 ;

Cellular Localization Cytoplasmic

Tissue specificity Endothelial cell,Epidermal keratinocytes in primary culture,Lung,Pe

Function Catalytic activity:Arachidonate + AH(2) + 2 O(2) = prostaglandin H(2) + A + H(2)O.,cofactor:Binds 1 heme B (iron-protoporphyrin IX) group per subunit.,Disease:Likely to play a role in inflammatory diseases such as rheumatoid arthritis.,Function:May have a role as a major mediator of inflammation and/or a role for prostanoid signaling in activity-dependent plasticity.,induction:By cytokines and mitogens.,miscellaneous:This enzyme acts both as a dioxygenase and as a peroxidase.,miscellaneous:This enzyme is the target of nonsteroidal anti-inflammatory drugs such as aspirin.,pathway:Lipid metabolism; prostaglandin biosynthesis.,similarity:Belongs to the prostaglandin G/H synthase family.,similarity:Contains 1 EGF-like domain.,subunit:Homodimer.,

Validation Data



Human colon carcinoma tissue was stained with Anti-COX-2 (ABT-COX2) Antibody

Contact information

Orders: order@immunoway.com
Support: tech@immunoway.com
Telephone: 408-747-0189 (USA) 400-8787-807(China)
Website: <http://www.immunoway.com>
Address: 2200 Ringwood Ave San Jose, CA 95131 USA



Please scan the QR code to access additional product information:
COX-2 (ABT-COX2) IHC kit