

S100A6 (ABT-S100A6) IHC kit

CatalogNo: IHCM6668

Key Features

Host Species

- Mouse

Reactivity

- Human,

Applications

- IHC

Isotype

- IgG1,Kappa

Recommended Dilution Ratios

Storage

Storage* 2°C to 8°C/1 year

Basic Information

Clonality Monoclonal

Clone Number ABT-S100A6

Immunogen Information

Immunogen Synthesized peptide derived from human S100A6 AA range: 50-90

Specificity The antibody can specifically recognize human S100A6 protein.

Target Information

Gene name S100A6 CACY

Protein Name S100A6

Organism

Gene ID

UniProt ID

Human

[6277](#);

[P06703](#);

Cellular Localization

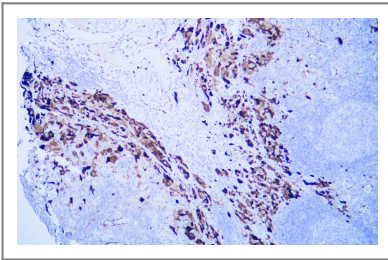
Nuclear, Cytoplasmic

Tissue specificity Brain,Fibroblast,Placenta,Platelet,

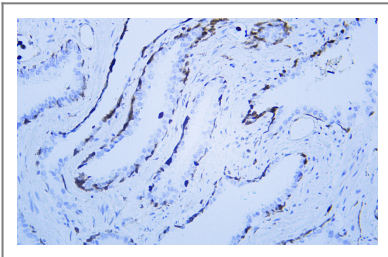
Function

induction:Preferentially expressed when quiescent fibroblasts are stimulated to proliferate. It is inducible by growth factors and overexpressed in acute myeloid leukemias.,miscellaneous:This protein co-purified with the prolactin receptor.,PTM:The N-terminus is blocked.,similarity:Belongs to the S-100 family.,similarity:Contains 2 EF-hand domains.,subunit:Homodimer, antiparallel. Interacts with SUGT1.,

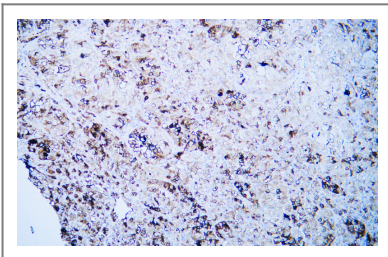
Validation Data



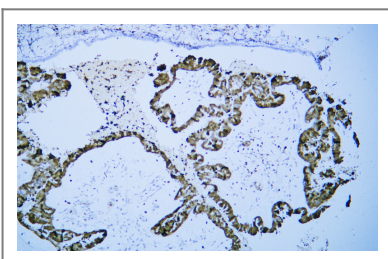
Human malignant melanoma tissue was stained with Anti-S100A6 (ABT-S100A6) Antibody



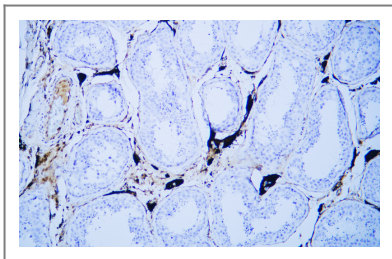
Human prostate tissue was stained with Anti-S100A6 (ABT-S100A6) Antibody



Human renal clear cell carcinoma tissue was stained with Anti-S100A6 (ABT-S100A6) Antibody



Human serous papillary adenocarcinoma of ovary tissue was stained with Anti-S100A6 (ABT-S100A6) Antibody



Human testis tissue was stained with Anti-S100A6 (ABT-S100A6) Antibody

| Contact information

Orders: order@immunoway.com
Support: tech@immunoway.com
Telephone: 408-747-0189 (USA) 400-8787-807(China)
Website: <http://www.immunoway.com>
Address: 2200 Ringwood Ave San Jose, CA 95131 USA



Please scan the QR code to access additional product information:
S100A6 (ABT-S100A6) IHC kit

For Research Use Only. Not for Use in Diagnostic Procedures.

[Antibody](#) | [ELISA Kits](#) | [Protein](#) | [Reagents](#)