

## GCDFP-15 (ABT-GCDFP15) IHC kit

CatalogNo: IHCM6661

### Key Features

#### Host Species

- Mouse

#### Reactivity

- Human,

#### Applications

- IHC

#### Isotype

- IgG1,Kappa

### Recommended Dilution Ratios

### Storage

**Storage\*** 2°C to 8°C/1 year

### Basic Information

**Clonality** Monoclonal

**Clone Number** ABT-GCDFP15

### Immunogen Information

**Immunogen** Synthesized peptide derived from human Gross cystic disease fluid protein-15 (GCDFP-15) AA range: 50-146

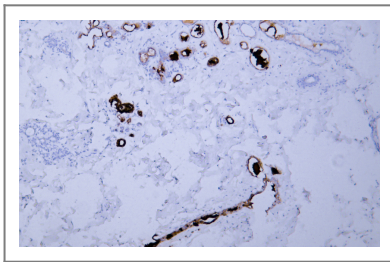
**Specificity** The antibody can specifically recognize human GCDFP-15 protein.

### Target Information

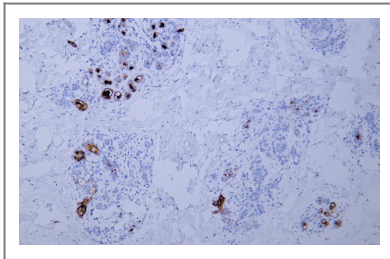
**Gene name** PIP GCDFP15 GPIP4

<b>Protein Name</b>	Gross cystic disease fluid protein-15 (GCDFP-15)		
	<b>Organism</b>	<b>Gene ID</b>	<b>UniProt ID</b>
	Human	<a href="#">5304;</a>	<a href="#">P12273;</a>
<b>Cellular Localization</b>	Cytoplasmic		
<b>Tissue specificity</b>	Expressed in pathological conditions of the mammary gland and in several exocrine tissues, such as the lacrimal, salivary, and sweat glands.		
<b>Function</b>	induction:By prolactin and androgen; inhibited by estrogen.,similarity:Belongs to the PIP family.,subunit:Monomer. Interacts with AZGP1.,tissue specificity:Expressed in pathological conditions of the mammary gland and in several exocrine tissues, such as the lacrimal, salivary, and sweat glands.,		

## Validation Data



Human breast tissue was stained with Anti-GCDFP-15 (ABT-GCDFP15) Antibody



Human breast tissue was stained with Anti-GCDFP-15 (ABT-GCDFP15) Antibody

## Contact information

Orders: [order@immunoway.com](mailto:order@immunoway.com)  
 Support: [tech@immunoway.com](mailto:tech@immunoway.com)  
 Telephone: 408-747-0189 (USA) 400-8787-807(China)  
 Website: <http://www.immunoway.com>  
 Address: 2200 Ringwood Ave San Jose, CA 95131 USA



Please scan the QR code to access additional product information:  
**GCDFP-15 (ABT-GCDFP15) IHC kit**