

Mast cell tryptase (PT2024) IHC kit

CatalogNo: IHCM6641

Key Features

Host Species

- Mouse

Reactivity

- Human,

Applications

- IHC

Isotype

- IgG1,Kappa

Recommended Dilution Ratios

Storage

Storage* 2°C to 8°C/1 year

Basic Information

Clonality Monoclonal

Clone Number PT2024

Immunogen Information

Immunogen Synthesized peptide derived from human Mast cell tryptase AA range: 200-275

Specificity The antibody can specifically recognize human Mast cell tryptase protein.

Target Information

Gene name TPSAB1 TPS1 TPS2 TPSB1

Protein Name Tryptase alpha/beta-1 (Tryptase-1) (Tryptase I) (Tryptase alpha-1)

Organism

Gene ID

UniProt ID

Human

[7177](#);

[Q15661](#);

Cellular Localization

Cytoplasmic

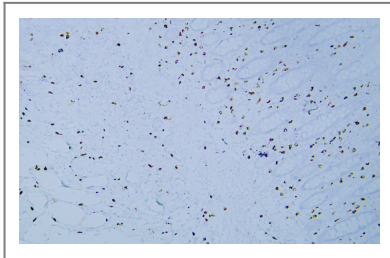
Tissue specificity

Isoform 1 and isoform 2 are expressed in lung, stomach, spleen, heart and skin; in these tissues, isoform 1 is predominant. Isoform 2 is expressed in aorta, spleen, and breast tumor, with highest levels in the endothelial cells of some blood vessels surrounding the aorta, as well as those surrounding the tumor and low levels, if any, in mast cells (at protein level).

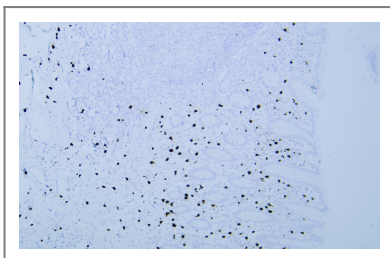
Function

Catalytic activity: Preferential cleavage: Arg-|-Xaa, Lys-|-Xaa, but with more restricted specificity than trypsin. Function: Tryptase is the major neutral protease present in mast cells and is secreted upon the coupled activation-degranulation response of this cell type. Function: Tryptase is the major neutral protease present in mast cells and is secreted upon the coupled activation-degranulation response of this cell type. Has an immunoprotective role during bacterial infection. Required to efficiently combat K.pneumoniae infection. polymorphism: There are two alleles; beta-II and beta-III which differ by 3 residues. similarity: Belongs to the peptidase S1 family. similarity: Belongs to the peptidase S1 family. Tryptase subfamily. similarity: Contains 1 peptidase S1 domain. subcellular location: Released from the secretory granules upon mast cell activation. subunit: Homotetramer.

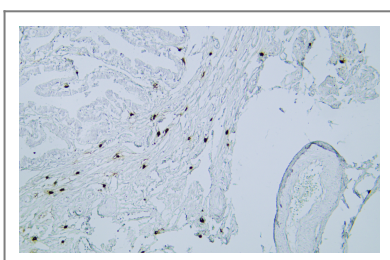
Validation Data



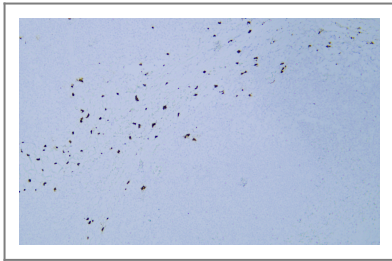
Human appendix tissue was stained with Anti-Mast cell tryptase (PT2024) Antibody



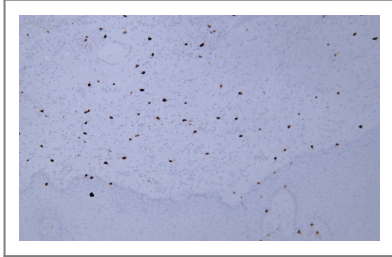
Human appendix tissue was stained with Anti-Mast cell tryptase (PT2024) Antibody



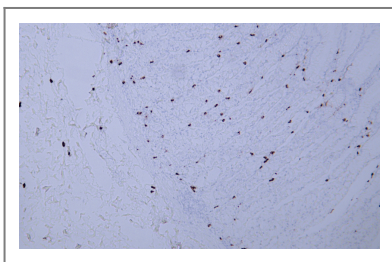
Human fallopian tube tissue was stained with Anti-Mast cell tryptase (PT2024) Antibody



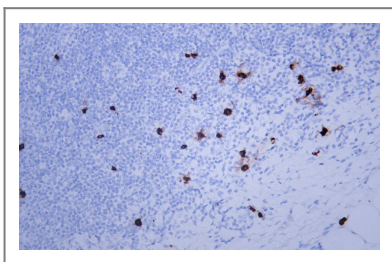
Human tonsil tissue was stained with Anti-Mast cell tryptase (PT2024) Antibody



Human cervical squamous cell carcinoma tissue was stained with anti-Mast Cell Tryptase (PT2024) Antibody



Human stomach tissue was stained with anti-Mast Cell Tryptase (PT2024) Antibody



Human tonsil tissue was stained with anti-Mast Cell Tryptase (PT2024) Antibody

Contact information

Orders: order@immunoway.com
Support: tech@immunoway.com
Telephone: 408-747-0189 (USA) 400-8787-807(China)
Website: <http://www.immunoway.com>
Address: 2200 Ringwood Ave San Jose, CA 95131 USA



Please scan the QR code to access additional product information:
Mast cell tryptase (PT2024) IHC kit

For Research Use Only. Not for Use in Diagnostic Procedures.

[Antibody](#) | [ELISA Kits](#) | [Protein](#) | [Reagents](#)