

## Insulin (PT2015) IHC kit

CatalogNo: IHCM6638

### Key Features

#### Host Species

- Mouse

#### Reactivity

- Human, Mouse, Rat,

#### Applications

- IHC

#### Isotype

- IgG2b, Kappa

### Recommended Dilution Ratios

### Storage

**Storage\*** 2°C to 8°C/1 year

### Basic Information

**Clonality** Monoclonal

**Clone Number** PT2015

### Immunogen Information

**Immunogen** Synthesized peptide derived from human Insulin AA range: 25-110

**Specificity** The antibody can specifically recognize human Insulin protein.

### Target Information

**Gene name** INS

**Protein Name** Insulin [Cleaved into: Insulin B chain; Insulin A chain]

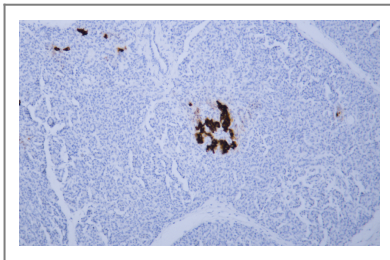
Organism	Gene ID	UniProt ID
Human	<a href="#">3630</a> ;	<a href="#">P01308</a> ;

**Cellular Localization** Cytoplasmic

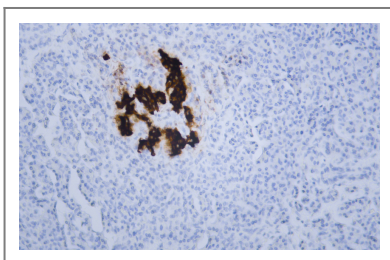
**Tissue specificity** Blood,Liver,Muscle,Pancreas,

**Function** Disease:Defects in INS are the cause of familial hyperproinsulinemia [MIM:176730].,Function:Insulin decreases blood glucose concentration. It increases cell permeability to monosaccharides, amino acids and fatty acids. It accelerates glycolysis, the pentose phosphate cycle, and glycogen synthesis in liver.,Function:Preptin undergoes glucose-mediated co-secretion with insulin, and acts as physiological amplifier of glucose-mediated insulin secretion. Exhibits osteogenic properties by increasing osteoblast mitogenic activity through phosphoactivation of MAPK1 and MAPK3.,Function:The insulin-like growth factors possess growth-promoting activity. In vitro, they are potent mitogens for cultured cells. IGF-II is influenced by placental lactogen and may play a role in fetal development.,mass spectrometry: PubMed:12586351; PubMed:15359740,online information:Clinical information on Eli Lilly insulin products,online information:Insulin entry,online information:Insulin-like growth factor 2 entry,online information:Protein of the 20th century - Issue 9 of April 2001,pharmaceutical:Available under the names Humulin or Humalog (Eli Lilly) and Novolin (Novo Nordisk). Used in the treatment of diabetes. Humalog is an insulin analog with 52-Lys-Pro-53 instead of 52-Pro-Lys-53.,similarity:Belongs to the insulin family.,subunit:Heterodimer of a B chain and an A chain linked by two disulfide bonds.,

## Validation Data



Human pancreas tissue was stained with anti-Insulin (PT2015) Antibody



Human pancreas tissue was stained with anti-Insulin (PT2015) Antibody

## Contact information

Orders: order@immunoway.com  
Support: tech@immunoway.com  
Telephone: 408-747-0189 (USA) 400-8787-807(China)  
Website: http://www.immunoway.com  
Address: 2200 Ringwood Ave San Jose, CA 95131 USA



Please scan the QR code  
to access additional  
product information:  
**Insulin (PT2015) IHC  
kit**

---

For Research Use Only. Not for Use in Diagnostic Procedures.

[Antibody](#) | [ELISA Kits](#) | [Protein](#) | [Reagents](#)