

Calretinin (ABT-Calret 1) IHC kit

CatalogNo: IHCM6569

Key Features

Host Species

- Mouse

Reactivity

- Human, Mouse, Rat,

Applications

- IHC

Isotype

- IgG2a, Kappa

Recommended Dilution Ratios

Storage

Storage* 2°C to 8°C/1 year

Basic Information

Clonality Monoclonal

Clone Number ABT-Calret 1

Immunogen Information

Immunogen Recombinant protein

Specificity The antibody can specifically recognize human Calretinin protein.

Target Information

Gene name CALB2 CAB29

Protein Name Calretinin (CR) (29 kDa calbindin)

Organism

Gene ID

UniProt ID

Human

[794;](#)

[P22676;](#)

Cellular Localization

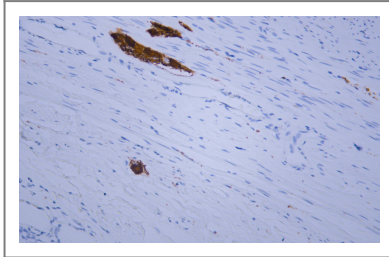
Cytoplasmic, Nuclear

Tissue specificity Brain.

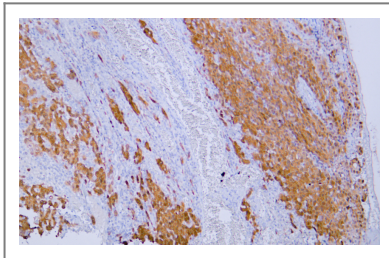
Function

Function:Calretinin is a calcium-binding protein which is abundant in auditory neurons.,online information:Calbindin entry,similarity:Belongs to the calbindin family.,similarity:Contains 6 EF-hand domains.,tissue specificity:Brain.,

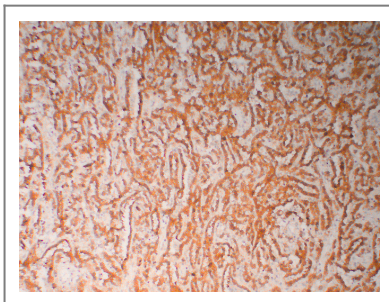
Validation Data



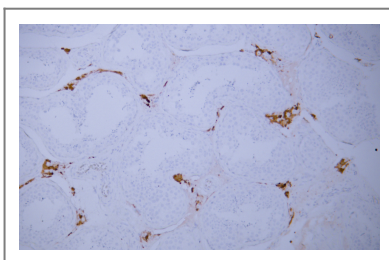
Human appendix tissue was stained with anti-Calretinin(ABT-Calret 1) antibody.



Human mesothelioma tissue was stained with anti-Calretinin(ABT-Calret 1) antibody.



Human mesothelioma tissue was stained with anti-Calretinin(ABT-Calret 1) antibody.



Human testis tissue was stained with anti-Calretinin(ABT-Calret 1) antibody.

| Contact information

Orders: order@immunoway.com
Support: tech@immunoway.com
Telephone: 408-747-0189 (USA) 400-8787-807(China)
Website: <http://www.immunoway.com>
Address: 2200 Ringwood Ave San Jose, CA 95131 USA



Please scan the QR code to access additional product information:
Calretinin (ABT-Calret 1) IHC kit

For Research Use Only. Not for Use in Diagnostic Procedures.

[Antibody](#) | [ELISA Kits](#) | [Protein](#) | [Reagents](#)