

Actin, smooth muscle (SMA) (ABT-SMA) IHC kit

CatalogNo: IHCM6566

Key Features

Host Species

- Mouse

Reactivity

- Human, Mouse, Rat,

Applications

- IHC

Isotype

- IgG2a, Kappa

Recommended Dilution Ratios

Storage

Storage* 2°C to 8°C/1 year

Basic Information

Clonality Monoclonal

Clone Number ABT-SMA

Immunogen Information

Immunogen Synthesized peptide derived from human Actin, smooth muscle (SMA) AA range: 1-100

Specificity The antibody can specifically recognize smooth muscle actin and shows no reaction with actin of skeletal muscle or cardiac muscle.

Target Information

Gene name Actin, smooth muscle

Protein Name Actin, smooth muscle

Organism

Gene ID

UniProt ID

Human

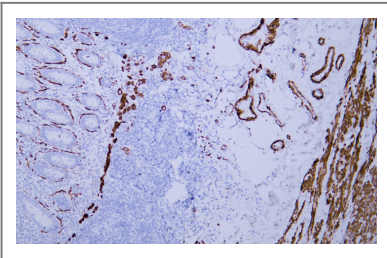
[P62736](#); [P63267](#);

Cellular Localization Cytoplasmic

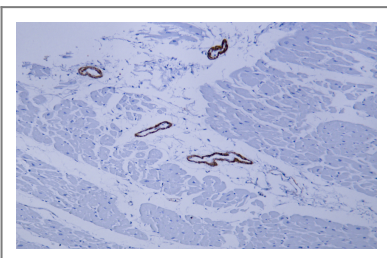
Tissue specificity Pituitary,Uterus,

Function Disease:Defects in ACTA2 are the cause of aortic aneurysm familial thoracic type 6 (AAT6) [MIM:611788]. AATs are characterized by permanent dilation of the thoracic aorta usually due to degenerative changes in the aortic wall. They are primarily associated with a characteristic histologic appearance known as 'medial necrosis' or 'Erdheim cystic medial necrosis' in which there is degeneration and fragmentation of elastic fibers, loss of smooth muscle cells, and an accumulation of basophilic ground substance.,Function:Actins are highly conserved proteins that are involved in various types of cell motility and are ubiquitously expressed in all eukaryotic cells.,miscellaneous:In vertebrates 3 main groups of actin isoforms, alpha, beta and gamma have been identified. The alpha actins are found in muscle tissues and are a major constituent of the contractile apparatus. The beta and gamma actins coexist in most cell types as components of the cytoskeleton and as mediators of internal cell motility.,similarity:Belongs to the actin family.,subunit:Polymerization of globular actin (G-actin) leads to a structural filament (F-actin) in the form of a two-stranded helix. Each actin can bind to 4 others.,

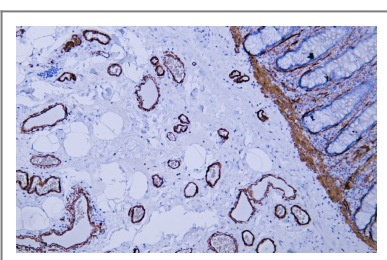
Validation Data



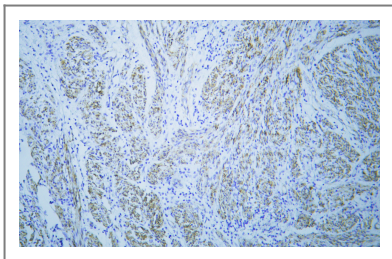
Human appendix tissue was stained with anti-SMA(ABT-SMA) antibody.



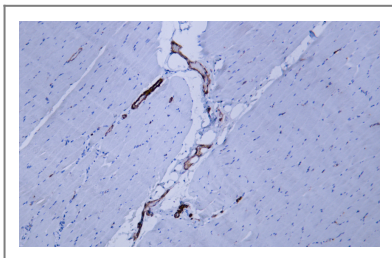
Human cardiac muscle tissue was stained with anti-SMA(ABT-SMA) antibody.



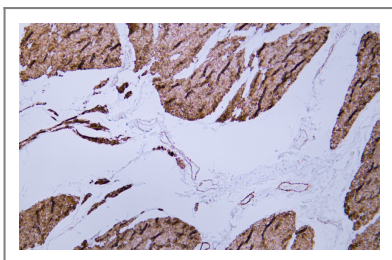
Human colon tissue was stained with anti-SMA(ABT-SMA) antibody.



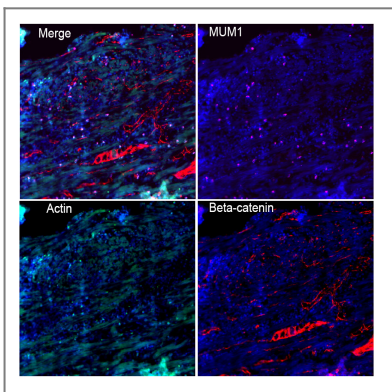
Human leiomyoma tissue was stained with anti-SMA(ABT-SMA) antibody.



Human skeletal muscle tissue was stained with anti-SMA(ABT-SMA) antibody.



Human smooth muscle tissue was stained with anti-SMA(ABT-SMA) antibody.



Fluorescence multiplex immunohistochemical analysis of normal human appendix tissue (formalin-fixed paraffin-embedded section).The section was incubated in 3 rounds of staining; in the order of Actin .(Catalog no:YM6566 1/200 dilution), Beta-catenin .(Catalog no: YM6675 1/200 dilution), MUM1. (Catalog no:YM6762 1/200 dilution),each using a separate fluorescent tyramide signal amplification system : Treble-Fluorescence immunohistochemical mouse/rabbit kit Catalog NO: RS0035 (pH9.0)

Contact information

Orders: order@immunoway.com
Support: tech@immunoway.com
Telephone: 408-747-0189 (USA) 400-8787-807(China)
Website: <http://www.immunoway.com>
Address: 2200 Ringwood Ave San Jose, CA 95131 USA



Please scan the QR code to access additional product information:
Actin, smooth muscle (SMA) (ABT-SMA) IHC kit