

TSH (ABT-TSH) IHC kit

CatalogNo: IHCM6548

Key Features

Host Species

- Mouse

Reactivity

- Human,

Applications

- IHC

Isotype

- IgG1,Lambda

Recommended Dilution Ratios

Storage

Storage* 2°C to 8°C/1 year

Basic Information

Clonality Monoclonal

Clone Number ABT-TSH

Immunogen Information

Immunogen Synthesized peptide derived from human Thyroid-Stimulating Hormone(TSH) AA range: 50-138

Specificity The antibody can specifically recognize human TSH protein.

Target Information

Gene name TSHB

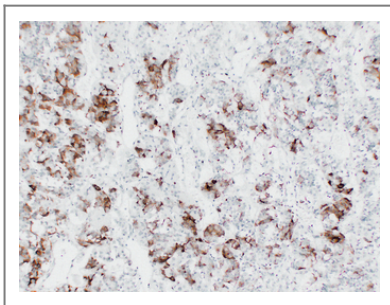
Protein Name Thyrotropin subunit beta (Thyroid-stimulating hormone subunit beta) (TSH-B) (TSH-beta) (Thyrotropin beta chain) (Thyrotropin alfa)

Organism	Gene ID	UniProt ID
Human	7252 ;	P01222 ;

Cellular Localization Cytoplasmic

Function Function:Indispensable for the control of thyroid structure and metabolism.,online information:Clinical information on Thyrogen,online information:Thyroid-stimulating hormone entry,pharmaceutical:Available under the name Thyrogen (Genzyme). Used in combination with other tests to detect recurring or leftover thyroid cancer cells in patients with a history of certain types of thyroid cancer.,similarity:Belongs to the glycoprotein hormones subunit beta family.,subunit:Heterodimer of a common alpha chain and a unique beta chain which confers biological specificity to thyrotropin, lutropin, follitropin and gonadotropin.,

Validation Data



Human pituitary adenoma tissue was stained with Anti-TSH (ABT-TSH) Antibody

Contact information

Orders: order@immunoway.com
Support: tech@immunoway.com
Telephone: 408-747-0189 (USA) 400-8787-807(China)
Website: <http://www.immunoway.com>
Address: 2200 Ringwood Ave San Jose, CA 95131 USA



Please scan the QR code to access additional product information:
TSH (ABT-TSH) IHC kit

For Research Use Only. Not for Use in Diagnostic Procedures.

[Antibody](#) | [ELISA Kits](#) | [Protein](#) | [Reagents](#)