

IGF-2 (PT1543) IHC kit

CatalogNo: IHCM6543

Key Features

Host Species

- Mouse

Reactivity

- Human,

Applications

- IHC

Isotype

- IgG2b,Kappa

Recommended Dilution Ratios

Storage

Storage* 2°C to 8°C/1 year

Basic Information

Clonality Monoclonal

Clone Number PT1543

Immunogen Information

Immunogen Synthesized peptide derived from human IGF-2 AA range: 1-100

Specificity The antibody can specifically recognize human IGF-2 protein.

Target Information

Gene name IGF2 PP1446

Protein Name Insulin-like growth factor II (IGF-II) (Somatomedin-A) [Cleaved into: Insulin-like growth factor II; Insulin-like growth factor II Ala-25 Del; Preptin]

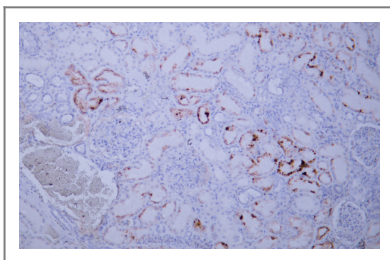
Organism	Gene ID	UniProt ID
Human	3481 ;	P01344 ;

Cellular Localization Cytoplasmic

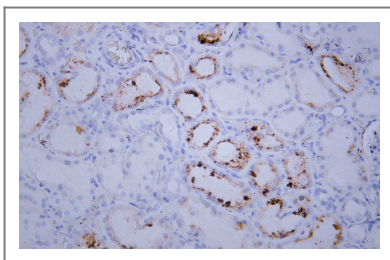
Tissue specificity Expressed in heart, placenta, lung, liver, muscle, kidney, tongue, limb, eye and pancreas.

Function Disease:Defects in INS are the cause of familial hyperproinsulinemia [MIM:176730].,Function:Insulin decreases blood glucose concentration. It increases cell permeability to monosaccharides, amino acids and fatty acids. It accelerates glycolysis, the pentose phosphate cycle, and glycogen synthesis in liver.,Function:Preptin undergoes glucose-mediated co-secretion with insulin, and acts as physiological amplifier of glucose-mediated insulin secretion. Exhibits osteogenic properties by increasing osteoblast mitogenic activity through phosphoactivation of MAPK1 and MAPK3.,Function:The insulin-like growth factors possess growth-promoting activity. In vitro, they are potent mitogens for cultured cells. IGF-II is influenced by placental lactogen and may play a role in fetal development.,mass spectrometry: PubMed:12586351; PubMed:15359740,online information:Clinical information on Eli Lilly insulin products,online information:Insulin entry,online information:Insulin-like growth factor 2 entry,online information:Protein of the 20th century - Issue 9 of April 2001,pharmaceutical:Available under the names Humulin or Humalog (Eli Lilly) and Novolin (Novo Nordisk). Used in the treatment of diabetes. Humalog is an insulin analog with 52-Lys-Pro-53 instead of 52-Pro-Lys-53.,similarity:Belongs to the insulin family.,subunit:Heterodimer of a B chain and an A chain linked by two disulfide bonds.,

Validation Data



Human kidney tissue was stained with anti-IGF-2 (PT1543) Antibody



Human kidney tissue was stained with anti-IGF-2 (PT1543) Antibody

Contact information

Orders: order@immunoway.com
Support: tech@immunoway.com
Telephone: 408-747-0189 (USA) 400-8787-807(China)
Website: http://www.immunoway.com
Address: 2200 Ringwood Ave San Jose, CA 95131 USA



Please scan the QR code
to access additional
product information:
**IGF-2 (PT1543) IHC
kit**

For Research Use Only. Not for Use in Diagnostic Procedures.

[Antibody](#) | [ELISA Kits](#) | [Protein](#) | [Reagents](#)