

## Parathyroid Hormone (PTH) (PT0210) IHC kit

CatalogNo: IHCM6470

### Key Features

#### Host Species

- Mouse

#### Reactivity

- Human,

#### Applications

- IHC

#### Isotype

- IgG1,Kappa

### Recommended Dilution Ratios

### Storage

**Storage\*** 2°C to 8°C/1 year

### Basic Information

**Clonality** Monoclonal

**Clone Number** PT0210

### Immunogen Information

**Immunogen** Synthesized peptide derived from human Parathyroid Hormone (PTH) AA range: 50-115

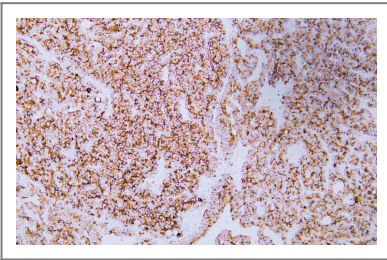
**Specificity** The antibody can specifically recognize human Parathyroid Hormone protein.

### Target Information

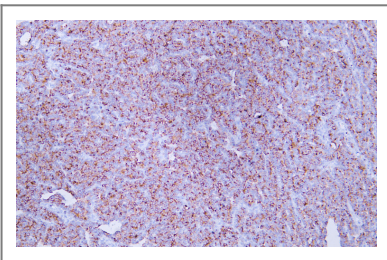
**Gene name** PTH

<b>Protein Name</b>	Parathyroid hormone (PTH) (Parathormone) (Parathyrin)		
	<b>Organism</b>	<b>Gene ID</b>	<b>UniProt ID</b>
	Human	<a href="#">5741</a> ;	<a href="#">P01270</a> ;
<b>Cellular Localization</b>	Cytoplasmic, Membranous		
<b>Function</b>	Disease:Defects in PTH are a cause of familial isolated hypoparathyroidism (FIH) [MIM:146200]. FIH exist both as autosomal dominant and recessive forms of hypoparathyroidism.,Function:PTH elevates calcium level by dissolving the salts in bone and preventing their renal excretion.,online information:Parathyroid hormone entry,similarity:Belongs to the parathyroid hormone family.,		

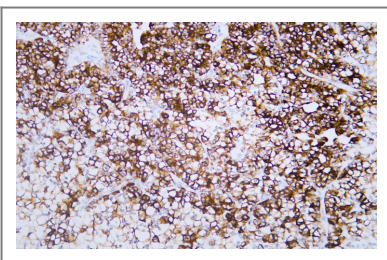
## Validation Data



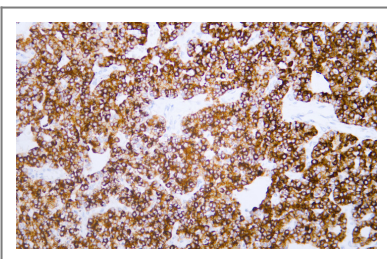
Human parathyroidoma tissue was stained with anti-Parathyroid Hormone (PT0210) Antibody



Human parathyroidoma tissue was stained with anti-Parathyroid Hormone (PT0210) Antibody



Human parathyroidoma tissue was stained with anti-Parathyroid Hormone (PT0210) Antibody



Human parathyroidoma tissue was stained with anti-Parathyroid Hormone (PT0210) Antibody

## | Contact information

Orders: order@immunoway.com  
Support: tech@immunoway.com  
Telephone: 408-747-0189 (USA) 400-8787-807(China)  
Website: <http://www.immunoway.com>  
Address: 2200 Ringwood Ave San Jose, CA 95131 USA



Please scan the QR code to access additional product information:  
**Parathyroid Hormone (PTH) (PT0210) IHC kit**

---

For Research Use Only. Not for Use in Diagnostic Procedures.

[Antibody](#) | [ELISA Kits](#) | [Protein](#) | [Reagents](#)