

## CD5 (ABT-CD5) IHC kit

CatalogNo: IHCM6286

### Key Features

#### Host Species

- Mouse

#### Reactivity

- Human,

#### Applications

- IHC

#### Isotype

- IgG2a,Kappa

### Recommended Dilution Ratios

### Storage

**Storage\*** 2°C to 8°C/1 year

### Basic Information

**Clonality** Monoclonal

**Clone Number** ABT-CD5

### Immunogen Information

**Immunogen** Synthesized peptide derived from human CD5 AA range: 200-300

**Specificity** The antibody can specifically recognize human CD5 protein.

### Target Information

**Gene name** CD5 LEU1

**Protein Name** T-cell surface glycoprotein CD5 (Lymphocyte antigen T1/Leu-1) (CD antigen CD5)

**Organism**

**Gene ID**

**UniProt ID**

Human

[921](#);

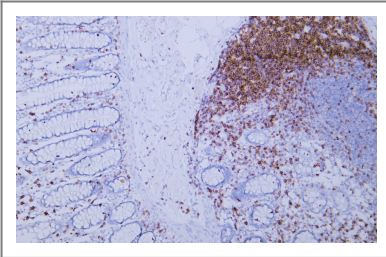
[P06127](#);

**Cellular Localization** Membranous

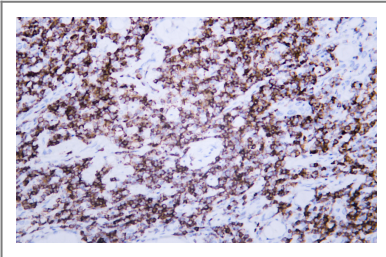
**Tissue specificity** Lymphocyte,Pancreas,Tonsil,

**Function** Function:May act as a receptor in regulating T-cell proliferation. CD5 interacts with CD72/LYB-2.,similarity:Contains 3 SRCR domains.,

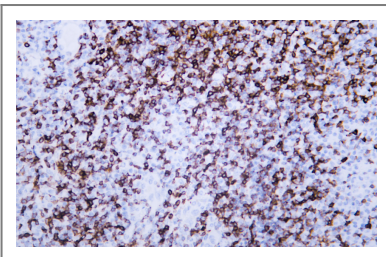
## Validation Data



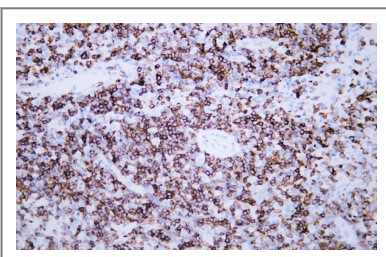
Human colon tissue was stained with Anti-CD5 (ABT-CD5) Antibody



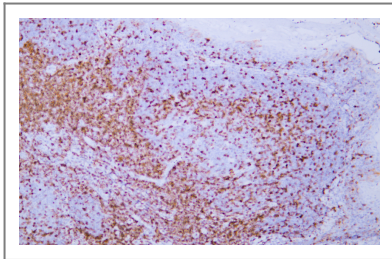
Human lymphoma tissue was stained with Anti-CD5 (ABT-CD5) Antibody



Human lymphoma tissue was stained with Anti-CD5 (ABT-CD5) Antibody



Human lymphoma tissue was stained with Anti-CD5 (ABT-CD5) Antibody



Human tonsil tissue was stained with Anti-CD5 (ABT-CD5) Antibody

## Contact information

Orders: [order@immunoway.com](mailto:order@immunoway.com)  
Support: [tech@immunoway.com](mailto:tech@immunoway.com)  
Telephone: 408-747-0189 (USA) 400-8787-807(China)  
Website: <http://www.immunoway.com>  
Address: 2200 Ringwood Ave San Jose, CA 95131 USA



Please scan the QR code  
to access additional  
product information:  
**CD5 (ABT-CD5) IHC  
kit**

---

For Research Use Only. Not for Use in Diagnostic Procedures.

[Antibody](#) | [ELISA Kits](#) | [Protein](#) | [Reagents](#)