

## CD35 (ABT-CD35) IHC kit

CatalogNo: IHCM6280

### Key Features

#### Host Species

- Mouse

#### Reactivity

- Human,

#### Applications

- IHC

#### Isotype

- IgG1,Kappa

### Recommended Dilution Ratios

### Storage

**Storage\*** 2°C to 8°C/1 year

### Basic Information

**Clonality** Monoclonal

**Clone Number** ABT-CD35

### Immunogen Information

**Immunogen** Synthesized peptide derived from human CD35 AA range: 300-400

**Specificity** The antibody can specifically recognize human CD35 protein.

### Target Information

**Gene name** CR1 C3BR

**Protein Name** Complement receptor type 1 (C3b/C4b receptor) (CD antigen CD35)

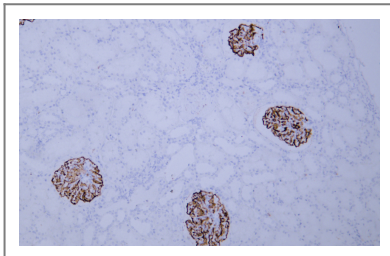
Organism	Gene ID	UniProt ID
Human	<a href="#">1378</a> ;	<a href="#">P17927</a> ;

**Cellular Localization** Membranous

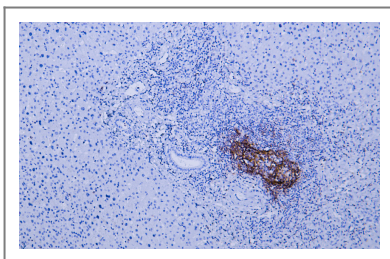
**Tissue specificity** Present on erythrocytes, a subset of T cells, mature B cells, follicular dendritic cells, monocytes and granulocytes.

**Function** Function:Mediates cellular binding of particles and immune complexes that have activated complement.,miscellaneous:This is the sequence of the F allotype of CR1.,online information:Blood group antigen gene mutation database,polymorphism:CR1 contains a system of antigens called the Knops blood group system. Polymorphisms within this system are involved in malarial rosetting, a process associated with cerebral malaria, the major cause of mortality in Plasmodium falciparum malaria. Common Knops system antigens include McCoy (McC) and Sl(a)/Vil (Kn4, or Swain-Langley; Vil or Villien). Sl(a-) phenotype is more common in persons of African descent and may protect against fatal malaria.,similarity:Belongs to the receptors of complement activation (RCA) family.,similarity:Contains 30 Sushi (CCP/SCR) domains.,subunit:Monomer.,tissue specificity:Present on erythrocytes, leukocytes, glomerular podocytes, and splenic follicular dendritic cells.,

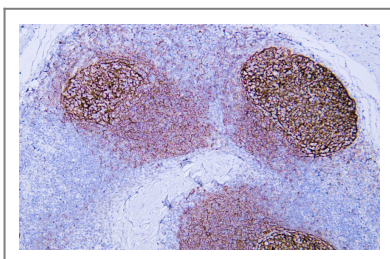
## Validation Data



Human kidney tissue was stained with Anti-CD35 (ABT-CD35) Antibody



Human liver tissue was stained with Anti-CD35 (ABT-CD35) Antibody



Human tonsil tissue was stained with Anti-CD35 (ABT-CD35) Antibody

## | Contact information

Orders: order@immunoway.com  
Support: tech@immunoway.com  
Telephone: 408-747-0189 (USA) 400-8787-807(China)  
Website: <http://www.immunoway.com>  
Address: 2200 Ringwood Ave San Jose, CA 95131 USA



Please scan the QR code  
to access additional  
product information:  
**CD35 (ABT-CD35)**  
**IHC kit**

---

For Research Use Only. Not for Use in Diagnostic Procedures.

[Antibody](#) | [ELISA Kits](#) | [Protein](#) | [Reagents](#)