

Somatostatin (ABT232) IHC kit

CatalogNo: IHCM6226

Key Features

Host Species

- Mouse

Reactivity

- Human, Mouse, Rat,

Applications

- IHC

Isotype

- IgG2b, Kappa

Recommended Dilution Ratios

Storage

Storage* 2°C to 8°C/1 year

Basic Information

Clonality Monoclonal

Clone Number ABT232

Immunogen Information

Immunogen Synthesized peptide derived from human Somatostatin AA range: 50-116

Specificity The antibody can specifically recognize human Somatostatin protein.

Target Information

Gene name SST

Protein Name Growth hormone release inhibiting factor;Growth hormone release-inhibiting factor;Prepro somatostatin;SMS_HUMAN;SMST;Somatostatin 14;Somatostatin 28;Somatostatin-14;SST

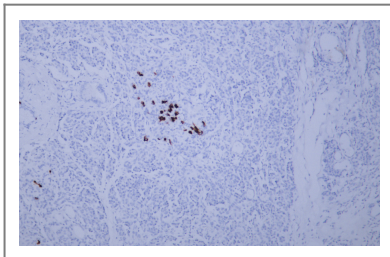
Organism	Gene ID	UniProt ID
Human	6750;	P61278;
Mouse		P60041;
Rat		P60042;

Cellular Localization Cytoplasmic

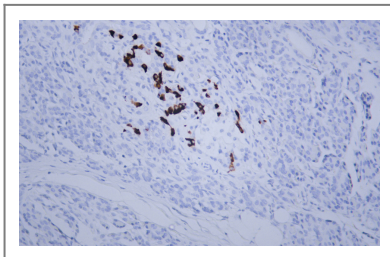
Tissue specificity Pancreas

Function Function:Somatostatin inhibits the release of somatotropin.,online information:Somatostatin entry,pharmaceutical:A synthetic analog known as octreotide or SMS 201-995 is available under the name Sandostatin (Novartis). It is used for the treatment of a variety of disorders including acromegaly and the symptomatic treatment of carcinoid tumors and vasoactive intestinal peptide tumors.,similarity:Belongs to the somatostatin family.,

Validation Data



Human pancreas tissue was stained with Anti-Somatostatin (ABT232) Antibody



Human pancreas tissue was stained with Anti-Somatostatin (ABT232) Antibody

Contact information

Orders: order@immunoway.com
Support: tech@immunoway.com
Telephone: 408-747-0189 (USA) 400-8787-807(China)
Website: <http://www.immunoway.com>
Address: 2200 Ringwood Ave San Jose, CA 95131 USA



Please scan the QR code to access additional product information:
Somatostatin (ABT232) IHC kit

