

## Thyroglobulin (PT0653) IHC kit

CatalogNo: IHCM6224

### Key Features

#### Host Species

- Mouse

#### Reactivity

- Human,

#### Applications

- IHC

#### Isotype

- IgG1,Kappa

### Recommended Dilution Ratios

### Storage

**Storage\*** 2°C to 8°C/1 year

### Basic Information

**Clonality** Monoclonal

**Clone Number** PT0653

### Immunogen Information

**Immunogen** Synthesized peptide derived from human Thyroglobulin AA range: 2700-2768

**Specificity** The antibody can specifically recognize human Thyroglobulin protein.

### Target Information

**Gene name** TG

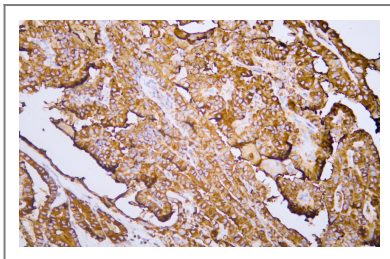
<b>Protein Name</b>	Thyroglobulin		
	<b>Organism</b>	<b>Gene ID</b>	<b>UniProt ID</b>
	Human	<a href="#">7038;</a>	<a href="#">P01266;</a>

**Cellular Localization** Cytoplasmic

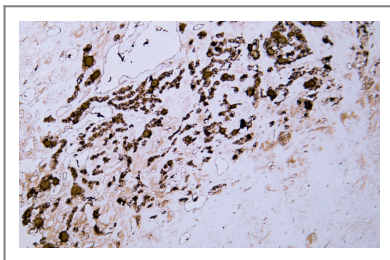
**Tissue specificity** Specifically expressed in the thyroid gland.

**Function** Disease:Defects in TG are a cause of some forms of goiter [MIM:188450]. Goiter is an enlargement of the thyroid gland. This is sometimes linked to hypothyroidism.,Disease:Variations in TG are associated with susceptibility to autoimmune thyroid disease type 3 (AITD3) [MIM:608175]. AITDs including Graves disease (GD) and Hashimoto thyroiditis (HT), are among the most common human autoimmune diseases. They are complex diseases, which are caused by an interaction between susceptibility genes and nongenetic factors, such as infection.,Function:Precursor of the iodinated thyroid hormones thyroxine (T4) and triiodothyronine (T3).,online information:Thyroglobulin entry,PTM:Sulfated.,similarity:Belongs to the type-B carboxylesterase/lipase family.,similarity:Contains 11 thyroglobulin type-1 domains.,subunit:Homodimer.,tissue specificity:Thyroid gland specific.,

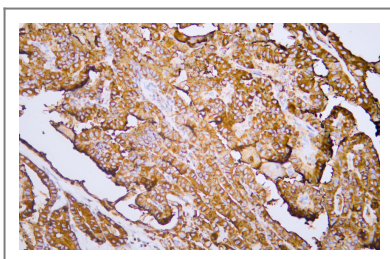
## Validation Data



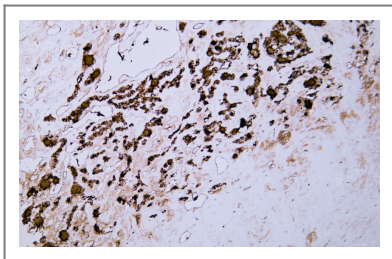
Human thyroid carcinoma tissue was stained with Anti-Thyroglobulin (PT0653) Antibody



Human thyroid follicular carcinoma tissue was stained with Anti-Thyroglobulin (PT0653) Antibody



Human thyroid carcinoma tissue was stained with Anti-Thyroglobulin (PT0653) Antibody



Human thyroid follicular carcinoma tissue was stained with Anti-Thyroglobulin (PT0653) Antibody

## Contact information

Orders: [order@immunoway.com](mailto:order@immunoway.com)  
Support: [tech@immunoway.com](mailto:tech@immunoway.com)  
Telephone: 408-747-0189 (USA) 400-8787-807(China)  
Website: <http://www.immunoway.com>  
Address: 2200 Ringwood Ave San Jose, CA 95131 USA



Please scan the QR code to access additional product information:  
**Thyroglobulin (PT0653) IHC kit**

For Research Use Only. Not for Use in Diagnostic Procedures.

[Antibody](#) | [ELISA Kits](#) | [Protein](#) | [Reagents](#)