

S100A1 (PT1428) IHC kit

CatalogNo: IHCM6223

Key Features

Host Species

- Mouse

Reactivity

- Human, Mouse, Rat,

Applications

- IHC

Isotype

- IgG1, Kappa

Recommended Dilution Ratios

Storage

Storage* 2°C to 8°C/1 year

Basic Information

Clonality Monoclonal

Clone Number PT1428

Immunogen Information

Immunogen Synthesized peptide derived from human S100A1 AA range: 1-50

Specificity The antibody can specifically recognize human S100A1 protein, and has no cross reaction with S100A4 or S100A6.

Target Information

Gene name S100A1 S100A

Protein Name S100A1

Organism

Gene ID

UniProt ID

Human

[6271](#);

[P23297](#);

Cellular Localization

Nuclear, Cytoplasmic

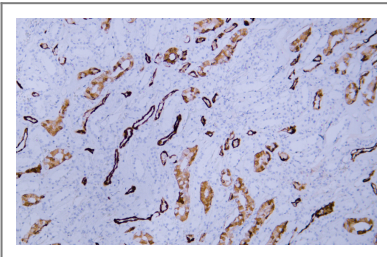
Tissue specificity

Highly prevalent in heart (PubMed:12804600, PubMed:1384693). Also found in lesser quantities in skeletal muscle and brain (PubMed:1384693).

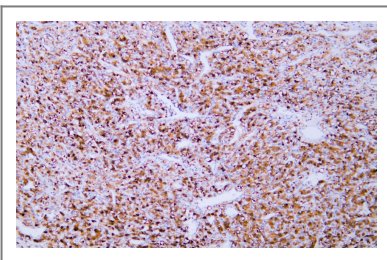
Function

Function:Weakly binds calcium but binds zinc very tightly-distinct binding sites with different affinities exist for both ions on each monomer. Physiological concentrations of potassium ion antagonize the binding of both divalent cations, especially affecting high-affinity calcium-binding sites.,similarity:Belongs to the S-100 family.,similarity:Contains 2 EF-hand domains.,subunit:Dimer of either two alpha chains, or two beta chains, or one alpha and one beta chain.,tissue specificity:Highly prevalent in heart. Also found in lesser quantities in skeletal muscle and brain.,

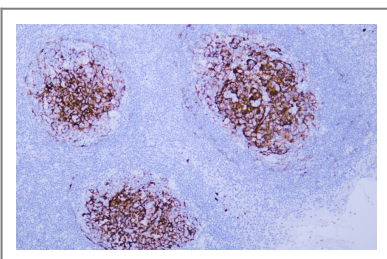
Validation Data



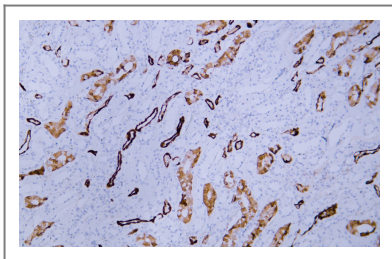
Human kidney tissue was stained with anti-S100A1 (PT1428) Antibody



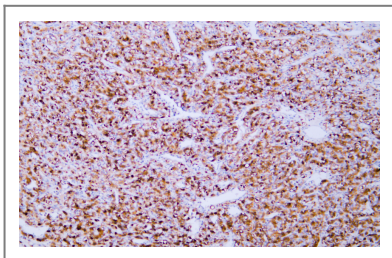
Human renal clear cell carcinoma tissue was stained with anti-S100A1 (PT1428) Antibody



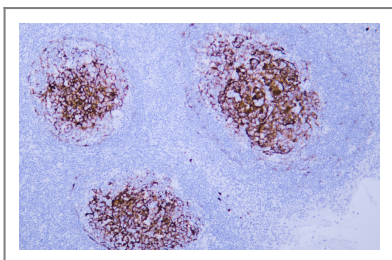
Human tonsil tissue was stained with anti-S100A1 (PT1428) Antibody



Human kidney tissue was stained with anti-S100A1 (PT1428) Antibody



Human renal clear cell carcinoma tissue was stained with anti-S100A1 (PT1428) Antibody



Human tonsil tissue was stained with anti-S100A1 (PT1428) Antibody

Contact information

Orders: order@immunoway.com
Support: tech@immunoway.com
Telephone: 408-747-0189 (USA) 400-8787-807(China)
Website: <http://www.immunoway.com>
Address: 2200 Ringwood Ave San Jose, CA 95131 USA



Please scan the QR code to access additional product information:
S100A1 (PT1428)
IHC kit

For Research Use Only. Not for Use in Diagnostic Procedures.

[Antibody](#) | [ELISA Kits](#) | [Protein](#) | [Reagents](#)