

S100A4 (ABT-S100A4) IHC kit

CatalogNo: IHCM6216

Key Features

Host Species

- Mouse

Reactivity

- Human,

Applications

- IHC

Isotype

- IgG1,Kappa

Recommended Dilution Ratios

Storage

Storage* 2°C to 8°C/1 year

Basic Information

Clonality Monoclonal

Clone Number ABT-S100A4

Immunogen Information

Immunogen Synthesized peptide derived from human S100A4 AA range: 50-101

Specificity The antibody can specifically recognize human S100A4 protein, and has no cross reaction with S100A1 or S100A6.

Target Information

Gene name S100A4 CAPL MTS1

Protein Name Protein S100-A4 (Calvasculin) (Metastasin) (Placental calcium-binding protein) (Protein Mts1) (S100 calcium-binding protein A4)

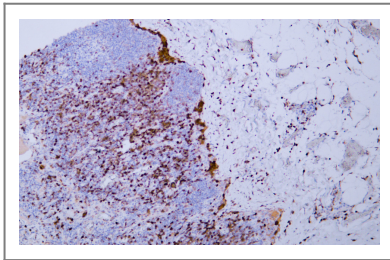
Organism	Gene ID	UniProt ID
Human	6275 ;	P26447 ;

Cellular Localization Nuclear, Cytoplasmic

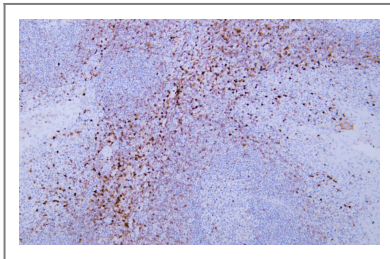
Tissue specificity Ubiquitously expressed.

Function similarity:Belongs to the S-100 family.,similarity:Contains 2 EF-hand domains.,subunit:Homodimer. Interacts with PPFIBP1 in a calcium-dependent mode.,tissue specificity:Ubiquitously expressed.,

Validation Data



Human malignant melanoma tissue was stained with Anti-S100A4 (ABT-S100A4) Antibody



Human tonsil tissue was stained with Anti-S100A4 (ABT-S100A4) Antibody

Contact information

Orders: order@immunoway.com
Support: tech@immunoway.com
Telephone: 408-747-0189 (USA) 400-8787-807(China)
Website: <http://www.immunoway.com>
Address: 2200 Ringwood Ave San Jose, CA 95131 USA



Please scan the QR code to access additional product information:
S100A4 (ABT-S100A4) IHC kit